



Modeling Nonlinear Partial Differential Equations and Construction of Solitary Wave Solutions in an Inductive Electrical Line

Tiague Takongmo Guy^{1*} and Jean Roger Bogning²

¹Department of Physics, Faculty of Science, University of Yaoundé 1, P.O.Box 812, Yaoundé, Cameroon.

²Department of Physics, Higher Teacher Training College, University of Bamenda, P.O.Box 39, Bamenda, Cameroon.

Authors' contributions

This work was carried out in collaboration between both authors. Author JRB designed the study, performed the statistical analysis, wrote the protocol and wrote the first draft of the manuscript. Author TTG managed the analyses of the study and managed the literature searches. Both authors read and approved the final manuscript.

Article Information

DOI: 10.9734/JAMCS/2019/v33i230174

Editor(s):

(1) Dr. Jacek Dziok, Institute of Mathematics, University of Rzeszow, 35-310 Rzeszow, Poland.

Reviewers:

(1) M. A. E. Abdelrahman, Mansoura University, Egypt.

(2) Mahmoud Mohamed Elhorbaty, Zagazig University, Egypt and Zawia University, Libya.

(3) Kamal Shah, Pakistan.

Complete Peer review History: <http://www.sdiarticle3.com/review-history/43376>

Received: 02 June 2018

Accepted: 10 August 2018

Published: 19 July 2019

Review Article

Abstract

A soliton is considered nowadays as a future wave reason being the fact that it is a stable, robust and non-dissipative solitary wave. If one uses a soliton as a transmission signal in electrical lines, this will have a great impacts in the domain of economic, technology and education. Given the fact that the propagation of the soliton is due to the interaction between dispersion and nonlinearity, it necessitates that the transmission medium should be dispersive and nonlinear. The physical system we have chosen for our survey is an inductive electrical line reason being the fact that it is the cheapest and very easy to manufacture than any other transmission lines; furthermore we find out the analytical variation that the magnetic flux linkage of inductors in the electrical line must undergo so that its transmission medium admits the propagation of solitary waves of required type. The aim of this work is to model nonlinear partial differential equations which govern the dynamics of those solitary waves in the line, to define the analytical expression of the magnetic flux linkage of inductors in the line and to find out some exact solutions of solitary waves types of those equations. To meet our objectives, we apply Kirchhoff laws to the circuit of a nonlinear inductive electrical line to model the nonlinear partial differential equation

*Corresponding author: E-mail: ttg19856@yahoo.com;

which describe the dynamics of those solitons. Further we apply the effective and direct Bogning-Djeumen Tchaho-Kofane method based on the identification of basic hyperbolic function coefficients to construct some exact soliton solutions of modeled equations. Numerical simulations have enabled to draw and observe the real profile of those solitary waves which are Kink soliton and Pulse soliton. The obtained results are supposed to permits: The facilitation of the choice of the type of line relative to the type of signal one wishes to send across, to increase the mathematical field knowledge, the reduction of amplification stations of those lines, The manufacturing of new inductors and new electrical lines susceptible of propagating those solitary waves.

Keywords: Inductive electrical line; modeling; construction; soliton solution; solitary wave; nonlinear partial differential equation; kink; pulse.

1 Introduction

Solitary waves, have evolved from the level of a simple water wave to the displacement of solitons in optical fibers [1]. From a solitary wave which is defined as a wave capable of displacing on longer distances without changing its shape and its velocity, we have borne in mind the fact that if one of such signals is used in engineering of information through an inductive electrical line, it will resist best on different dissipation factors. In this effect, we have decided to render two definitions of nonlinear magnetic flux linkage of inductors constituting networks of an inductive electrical transmission line. Then, we have applied them to model new nonlinear partial differential equations, which govern the dynamics of solitary waves in the said line. Many authors look for numerical solutions of nonlinear partial differential equations [2,3] but it is also better to look for exact analytical solutions which lead best to the information of our systems. In order to construct exact solitary wave solutions of every nonlinear partial differential equation obtained, we rely first on methods presented in [4-17]. Furthermore, we have decided to adopt the new Bogning-Djeumem Tchaho-Kofane method [18-23] reason being that it facilitates the construction of a solitary wave solution by identification of the basic hyperbolic function coefficients of nonlinear partial differential equations in a direct and effective manner. Having solved the equations, we have come up with solitary wave solutions of type Kink and type Pulse. The work presented in this paper is partitioned as follows: In the part 2, we present a general modeling of a nonlinear inductive electrical line; In part 3, we construct solitary wave solutions of type Kink; In part 4, we construct solitary wave solutions of type Pulse and we present at the end the conclusion in part 5.

2 General Modeling of a Nonlinear Inductive Electrical Line

Let us consider an electrical line constituting a good number of identical networks shown in figure 1 where G is the conductance of the resistor and R the resistance of another resistor, connected in a series branch with an inductor whose the magnetic flux linkage $\phi(i_n)$ changes in nonlinear manner in terms of the current i_n flowing through that inductor.

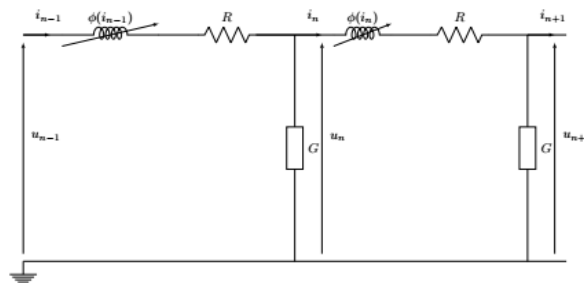


Fig. 1. Presentation of a nonlinear inductive electrical line

By applying Kirchhoff's laws to the circuit shown in figure 1, we obtain the following equations

$$u_n - u_{n+1} = Ri_n + \frac{\partial \phi_n}{\partial t}, \quad (1)$$

$$i_n = i_{n+1} + Gu_{n+1} \quad (2)$$

Where n is a positive integer that numbers each network of the line, i_n and i_{n+1} indicate respectively the current that flows through the inductor network order n and the inductor network order $n + 1$, u_n and u_{n+1} indicate respectively the voltage across resistors with conductance G of the network order n and the network order $n + 1$. ϕ_n Indicates the nonlinear magnetic flux linkage of the inductor network order n . Considering equation (1), equation (2) become

$$i_n = i_{n+1} + Gu_n - G \frac{\partial \phi_n}{\partial t} - RG i_n \quad (3)$$

The substitution of $Gu_n = i_{n-1} - i_n$ of equation (2) obtained during the previous order in equation (3), one obtains the differential equation below

$$i_{n+1} - 2i_n + i_{n-1} = G \frac{\partial \phi_n}{\partial t} + RG i_n \quad (4)$$

To obtain the continuum model, the left hand side of equation (4) has to be approximated to a spatial partial derivative with respect to $x = nh$ which represents the distance measured from the beginning of the line. h represents the distance that separates two consecutive nodes and which is equivalent to the spatial sampling derivatives period. We obtain as such spatial partial derivatives using Taylor expansion of i_{n+1} and i_{n-1} closely to i_n by considering the terms till fourth order in the following manner

$$i_{n+1} = i_n + \frac{h}{1!} \frac{\partial i_n}{\partial x} + \frac{h^2}{2!} \frac{\partial^2 i_n}{\partial x^2} + \frac{h^3}{3!} \frac{\partial^3 i_n}{\partial x^3} + \frac{h^4}{4!} \frac{\partial^4 i_n}{\partial x^4} \quad (5)$$

$$i_{n-1} = i_n - \frac{h}{1!} \frac{\partial i_n}{\partial x} + \frac{h^2}{2!} \frac{\partial^2 i_n}{\partial x^2} - \frac{h^3}{3!} \frac{\partial^3 i_n}{\partial x^3} + \frac{h^4}{4!} \frac{\partial^4 i_n}{\partial x^4} \quad (6)$$

and

$$i_{n+1} - 2i_n + i_{n-1} = h^2 \frac{\partial^2 i_n}{\partial x^2} + \frac{h^4}{12} \frac{\partial^4 i_n}{\partial x^4} \quad (7)$$

Equation (7) and (4) permits us to derive the result as follows

$$-h^2 \frac{\partial^2 i_n}{\partial x^2} - \frac{h^4}{12} \frac{\partial^4 i_n}{\partial x^4} + G \frac{\partial \phi_n}{\partial t} + RG i_n = 0 \quad (8)$$

Finally, we obtain the continuum model of the nonlinear inductive electrical line presented in figure1 by the nonlinear partial differential equation below

$$-h^2 \frac{\partial^2 i(x,t)}{\partial x^2} - \frac{h^4}{12} \frac{\partial^4 i(x,t)}{\partial x^4} + G \frac{\partial \phi(i(x,t))}{\partial t} + RGi(x,t) = 0 \quad (9)$$

Let's find out the solitary wave solutions of equation (9).

3 Construction of Solitary Wave Solution of Type Kink of Partial Differential Equation (9)

We define the nonlinear magnetic flux linkage of inductors on the analytical shape as follows

$$\phi(i(x,t)) = B_1 i^4(x,t) + B_2 i^2(x,t) + B_3 \ln(i^2(x,t) - B_0^2) \quad (10)$$

With $|i(x,t)| > |B_0|$. B_1 ; B_2 and B_3 are non-nil real numbers which will be chosen conveniently. By substituting the flux $\phi(i(x,t))$ of (10) in equation (9) we obtain the nonlinear partial differential equation written as

$$\begin{aligned} & \frac{B_0^2 h^4}{12} \frac{\partial^4 i(x,t)}{\partial x^4} - \frac{h^4}{12} i^2(x,t) \frac{\partial^4 i(x,t)}{\partial x^4} + B_0^2 h^2 \frac{\partial^2 i(x,t)}{\partial x^2} - h^2 i^2(x,t) \frac{\partial^2 i(x,t)}{\partial x^2} \\ & + (2GB_3 - 2B_0^2 GB_2) i(x,t) \frac{\partial i(x,t)}{\partial t} + (2GB_2 - 4B_0^2 GB_1) i^3(x,t) \frac{\partial i(x,t)}{\partial t} \\ & + 4GB_1 i^5(x,t) \frac{\partial i(x,t)}{\partial t} - B_0^2 RGi(x,t) + RGi^3(x,t) = 0. \end{aligned} \quad (11)$$

Considering : $m_1 = \frac{B_0^2 h^4}{12}$, $m_2 = -\frac{h^4}{12}$, $m_3 = B_0^2 h^2$, $m_4 = -h^2$, $m_5 = 2GB_3 - 2B_0^2 GB_2$, $m_6 = 2GB_2 - 4B_0^2 GB_1$, $m_7 = 4GB_1$, $m_8 = -B_0^2 RG$, $m_9 = RG$, equation (11) takes the following shape

$$\begin{aligned} & m_1 \frac{\partial^4 i(x,t)}{\partial x^4} + m_2 i^2(x,t) \frac{\partial^4 i(x,t)}{\partial x^4} + m_3 \frac{\partial^2 i(x,t)}{\partial x^2} + m_4 i^2(x,t) \frac{\partial^2 i(x,t)}{\partial x^2} + m_5 i(x,t) \frac{\partial i(x,t)}{\partial t} \\ & + m_6 i^3(x,t) \frac{\partial i(x,t)}{\partial t} + m_7 i^5(x,t) \frac{\partial i(x,t)}{\partial t} + m_8 i(x,t) + m_9 i^3(x,t) = 0. \end{aligned} \quad (12)$$

Let us use Bogning-Djeumen Tchaho-Kofane method [18-23] to come out with the solution of equation (12) under the analytical shape below

$$i(x,t) = a \tanh(kx - vt) \quad (13)$$

Where a , k and v are non-nil real numbers to be determined. Replacing $i(x,t)$ given by (13) in equation (12) we yield the following equation

$$\begin{aligned}
 & (-24m_2a^3k^4 - m_7a^6v) \frac{\sinh(kx - vt)}{\cosh^7(kx - vt)} \\
 & + (2m_7a^6v + 24m_1ak^4 + m_6a^4v + 32m_2a^3k^4 + 2m_4a^3k^2) \frac{\sinh(kx - vt)}{\cosh^5(kx - vt)} + \\
 & (-m_7a^6v - 8m_1ak^4 - 2m_3ak^2 - 8m_2a^3k^4 - m_9a^3 - m_5a^2v - m_6a^4v - 2m_4a^3k^2) \frac{\sinh(kx - vt)}{\cosh^3(kx - vt)} + \\
 & (m_8a + m_9a^3) \frac{\sinh(kx - vt)}{\cosh(kx - vt)} = 0.
 \end{aligned} \tag{14}$$

Equation (14) is valid if and only if each of its basic hyperbolic function coefficients is nil. This permits us to obtain the following set of four equations

$$\left\{ \begin{aligned}
 & -24m_2a^3k^4 - m_7a^6v = 0, \\
 & 2m_7a^6v + 24m_1ak^4 + m_6a^4v + 32m_2a^3k^4 + 2m_4a^3k^2 = 0, \\
 & -m_7a^6v - 8m_1ak^4 - 2m_3ak^2 - 8m_2a^3k^4 - m_9a^3 - m_5a^2v - m_6a^4v - 2m_4a^3k^2 = 0, \\
 & m_8a + m_9a^3 = 0.
 \end{aligned} \right. \tag{15}$$

Solving the set of equation (15) has permitted us to obtain the following results:

$$\begin{aligned}
 a &= \pm \sqrt{\frac{-m_8}{m_9}}, \quad k = \pm \frac{1}{2} \sqrt{\frac{m_4m_8m_7}{2m_2m_8m_7 + 3m_1m_9m_7 - 3m_6m_2m_9}}, \quad m_8m_9 < 0, \\
 v &= \frac{3m_2m_4^2m_7(-m_8m_9)^{\frac{3}{2}}}{2m_8(2m_2m_8m_7 + 3m_1m_9m_7 - 3m_6m_2m_9)^2} \\
 & \left(\begin{aligned}
 & m_8m_1^2m_5^2m_7^2 - 2m_8m_1m_5^2 - m_7m_6m_2 + m_8m_6^2m_2^2m_9^2 + \frac{4}{3}m_2m_8^2m_7^2m_1m_9 \\
 & - \frac{1}{6}m_8m_9m_7^2m_1m_3m_4 - \frac{4}{3}m_2^2m_8^2m_7m_6m_9 - \frac{1}{6}m_8m_5m_2m_4^2m_7m_9 + \frac{1}{6}m_8m_9m_7m_2m_4m_3m_6 \\
 & + \frac{4}{9}m_2^2m_8^3m_7^2 + \frac{1}{9}m_4^2m_8^2m_7^2m_1 - \frac{1}{9}m_8^2m_7^2m_3m_4m_2 = 0
 \end{aligned} \right) \tag{16}
 \end{aligned}$$

Replacing $m_1, m_2, m_3, m_4, m_5, m_6, m_7, m_8$ and m_9 by their different expressions in (16), we obtain the solution of the nonlinear partial differential equation (11) which models the dynamic of solitary waves of type Kink in the inductive line as follow

$$a = B_0, \quad k = \pm B_0 \left(\frac{-RGB_1}{h^4B_3} \right)^{\frac{1}{4}}, \quad v = \frac{-RB_0}{2B_3}, \quad B_2 = -\frac{4}{3}B_1B_0^2 - 2\sqrt{\frac{-B_1B_3}{RG}}; \quad B_1B_3 < 0$$

$$i(x,t) = B_0 \tanh \left(\pm B_0 \left(\frac{-RGB_1}{h^4 B_3} \right)^{\frac{1}{4}} x + \frac{RB_0}{2B_3} t \right) . \quad (17)$$

Considering the values of the following parameters $R = 1k\Omega$, $G = 10^{-3}\Omega^{-1}$, $B_0 = 20A$, $B_1 = 7Web.A^{-1}$, $B_3 = -10Web.A^{-3}$, $h = 10^{-1}m$, the expression of Kink soliton (17) takes the shape $i(x,t) = -20 \tanh(182,9x - 1000t)$. This permits to obtain in figure 2 the representation of real profile of that Kink soliton.

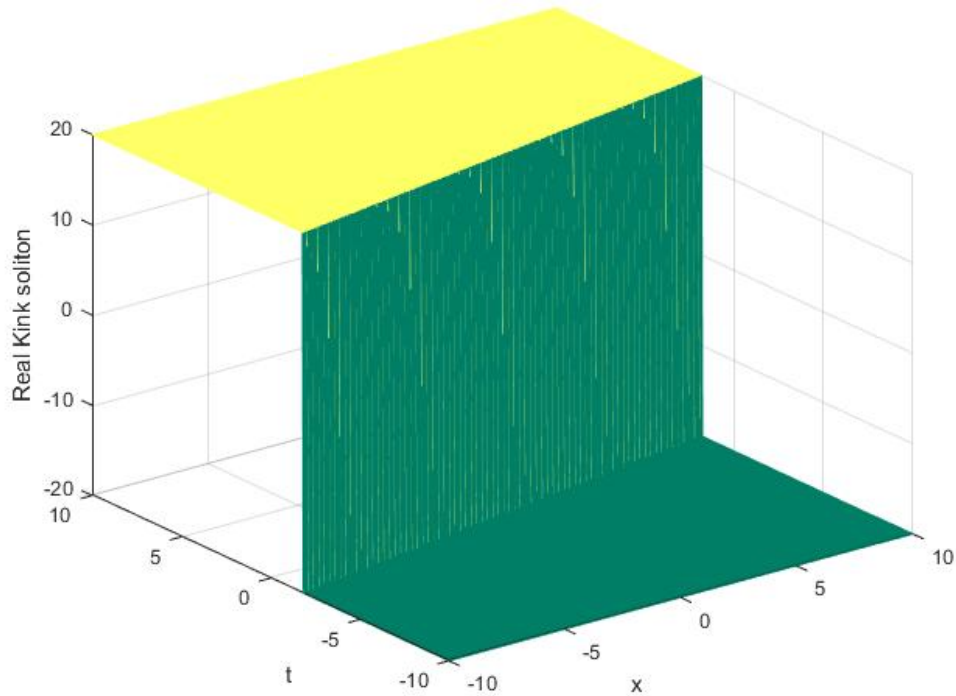


Fig. 2. Presentation of real Kink soliton profile

4 Construction of Solitary Wave Solution of Type Pulse Relative to Nonlinear Partial Differential Equation (9)

We define the nonlinear magnetic flux linkage of inductors with analytical shape as given:

$$\phi(i(x,t)) = B_1 i(x,t) \sqrt{1 - \left(\frac{i(x,t)}{B_0} \right)^2} + B_2 i^3(x,t) \sqrt{1 - \left(\frac{i(x,t)}{B_0} \right)^2} + B_3 \arctan \left(\sqrt{\frac{i^2(x,t)}{B_0^2 - i^2(x,t)}} \right) \quad (18)$$

With $|B_0| > |i(x,t)|$. B_1 ; B_2 and B_3 are non-nil real numbers whose conditions of choice will be established. A substituting of $\phi(i(x,t))$ of (18) in differential equation (9) permits us to obtain the nonlinear partial differential equation bellow

$$B_0 \sqrt{B_0^2 - i^2(x,t)} \left(-h^2 \frac{\partial^2 i(x,t)}{\partial x^2} - \frac{h^4}{12} \frac{\partial^4 i(x,t)}{\partial x^4} + RG i(x,t) \right) + G \left(-4B_2 i^4(x,t) + (3B_0^2 B_2 - 2B_1) i^2(x,t) + B_0^2 B_1 + B_0 B_3 \right) \frac{\partial i(x,t)}{\partial t} = 0. \tag{19}$$

Finding out the result of equation (19) on the analytical shape:

$$i(x,t) = a \operatorname{sech}(kx - vt) \tag{20}$$

Where a , k and v are non-nil real numbers to be determined. Substituting $i(x,t)$ of (20) in differential equation (19), we obtain the equation as follows

$$\begin{aligned} & \left(3a^3 vGB_0^2 B_2 - 2a^3 vGB_1 \right) \frac{\sinh(kx - vt)}{\cosh^4(kx - vt)} + \left(avGB_0 B_3 + avGB_0^2 B_1 \right) \frac{\sinh(kx - vt)}{\cosh^2(kx - vt)} \\ & - 4a^5 vGB_2 \frac{\sinh(kx - vt)}{\cosh^6(kx - vt)} + \left(B_0 R G a - \frac{1}{12} B_0 h^4 a k^4 - B_0 h^2 a k^2 \right) \frac{\sqrt{B_0^2 - \frac{a^2}{\cosh^2(kx - vt)}}}{\cosh(kx - vt)} \\ & + \left(2B_0 h^2 a k^2 + \frac{5}{3} B_0 h^4 a k^4 \right) \frac{\sqrt{B_0^2 - \frac{a^2}{\cosh^2(kx - vt)}}}{\cosh^3(kx - vt)} - 2B_0 h^4 a k^4 \frac{\sqrt{B_0^2 - \frac{a^2}{\cosh^2(kx - vt)}}}{\cosh^5(kx - vt)} = 0. \end{aligned} \tag{21}$$

We realize that to be able to transform the hyperbolic functions of (21) to the basic hyperbolic functions as recommended by the new Bogning-Djeumen Tchaho-Kofane [18-23] we must consider $B_0 = a$ such that

$$\sqrt{B_0^2 - \frac{a^2}{\cosh^2(kx - vt)}} = a \tanh(kx - vt) \tag{22}$$

The right-hand side of (22) has enables us to rearrange (21) as

$$\begin{aligned} & \left(3a^3 vGB_0^2 B_2 + 2B_0 a^2 h^2 k^2 + \frac{5}{3} B_0 a^2 h^4 k^4 - 2a^3 vGB_1 \right) \frac{\sinh(kx - vt)}{\cosh^4(kx - vt)} \\ & + \left(B_0 a^2 R G + avGB_0 B_3 - B_0 a^2 h^2 k^2 - \frac{1}{12} B_0 a^2 h^4 k^4 + avGB_0^2 B_1 \right) \frac{\sinh(kx - vt)}{\cosh^2(kx - vt)} \\ & + \left(-2B_0 a^2 h^4 k^4 - 4a^5 vGB_2 \right) \frac{\sinh(kx - vt)}{\cosh^6(kx - vt)} = 0. \end{aligned} \tag{23}$$

Equation (23) is valid if each coefficient of its basic hyperbolic function is equal to zero. This enables us to obtain the set of three equations as follows

$$\begin{cases} 3a^3vGB_0^2B_2 + 2B_0a^2h^2k^2 + \frac{5}{3}B_0a^2h^4k^4 - 2a^3vGB_1 = 0, \\ B_0a^2RG + avGB_0B_3 - B_0a^2h^2k^2 - \frac{1}{12}B_0a^2h^4k^4 + avGB_0^2B_1 = 0, \\ -2B_0a^2h^4k^4 - 4a^5vGB_2 = 0. \end{cases} \quad (24)$$

The result of the set of nonlinear equation (24) enables us to realize that solitary waves of type Pulse are easily displaced in the nonlinear inductive line with analytical shape given below:

$$a = B_0, v = \frac{-RB_0}{B_3}, k = \pm \left(\frac{2B_0^3B_2RG}{h^4B_3} \right)^{\frac{1}{4}}, B_3 = \frac{RG(B_2^2B_0^4 + 12B_2B_0^2B_1 + 36B_1^2)}{72B_0B_2},$$

$$i(x, t) = B_0 \operatorname{sech} \left(\pm \left(\frac{2B_0^3B_2RG}{h^4B_3} \right)^{\frac{1}{4}} x + \frac{RB_0}{B_3} t \right). \quad (25)$$

Considering the values of the following parameters $R = 1k\Omega$, $G = 10^{-3}\Omega^{-1}$, $B_0 = 20A$, $B_1 = 7Web.A^{-1}$, $B_2 = -10Web.A^{-3}$, $h = 10^{-1}m$, the expression of pulse soliton (17) takes the shape $i(x, t) = 20 \operatorname{sech}(34, 8x - 18, 3t)$. This permits to obtain in figure 3 the representation of real profile of that Pulse soliton.

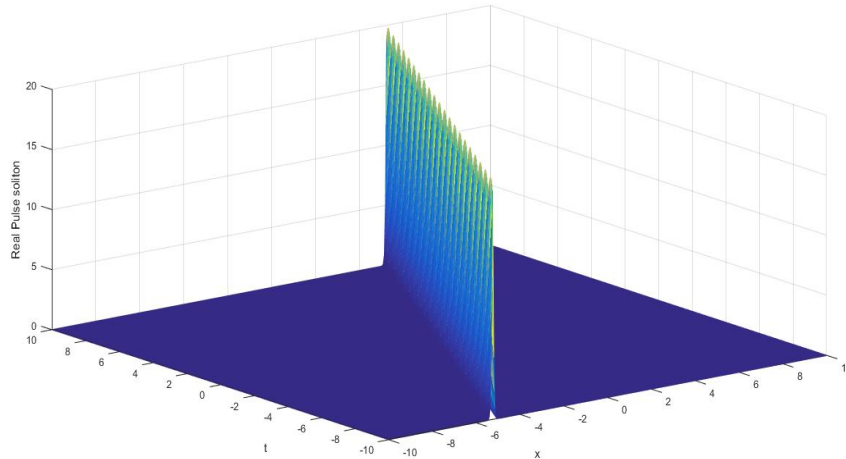


Fig. 3. Representation of real pulse soliton profile

5 Conclusion

At the end of this work, where we have modeled and constructed solitary wave solutions by two different nonlinear partial derivative equations of an inductive electrical line; it is therefore important to point out that the results obtained will first of all enable us in the domain of physics and telecommunication of engineering, the manufacturing of new transmission lines like inductive electrical lines whose magnetic flux

linkage of inductors varies one in a nonlinear shape defined in (10) and varies for the other in a nonlinear shape defined in (18). In addition, these results will permit us to ameliorate the quality of signals that will be propagated in those new lines. In fact, those signals are solitary waves of type Pulse obtained in (25) and type Kink obtained in (17) which by their definitions, propagate on a long distance maintaining their shape; their speed and resist best on different dissipative factors. Finally, in a typical mathematics domain, the results obtained has permitted us to define in (11) and (19) two new nonlinear partial derivative equations which have respectively for exact solutions solitary wave (17) and (25). This augments the field of mathematical knowledge. In order to inquire ideas concerning the stability of obtained solitary waves, it seems for us to study later their modulational instability before carrying out the practical survey where we will experiment the applicability and the perfection of these new inductive electrical lines.

Acknowledgements

We are grateful to all those who have been a source of inspiration in our studies; to the University of Yaoundé 1 and the ministry of higher education of Cameroon whom through their support has enabled us to achieve this work.

Competing Interests

Authors have declared that no competing interests exist.

References

- [1] Bogning JR, Tchakoutio Nguetcho AS, Kofané TC. Gap solitons coexisting with bright soliton in nonlinear fiber arrays. *International Journal of Nonlinear Science and Numerical Simulation*. 2005;6(4):371-385.
- [2] Numerical treatment of fractional order Cauchy reaction diffusion equations. *Chaos, Solitons and Fractals*. 2017;103:578-587.
- [3] Numerical treatment for traveling wave solutions of fractional Whitham-Broer-Kaup equations. *Alexandria Engineering Journal*; 2017.
- [4] Abdelrahman MAE, Sohaly MA. Solitary waves for the modified Korteweg-De Vries equation in deterministic case and random case. *J Phys Math*. 2017;8(1). DOI: 10.4172/2090-0902.1000214
- [5] Abdelrahman MAE, Sohaly MA. Solitary waves for the nonlinear Schrodinger problem with the probability distribution function in stochastic input case. *Eur. Phys. J. Plus*; 2017.
- [6] Abdelrahman MAE. A note on Riccati-Bernoulli Sub-ODE method combined with complex transform method applied to fractional differential equations. *Nonlinear Engineering Modeling and Application*; 2018. DOI: <https://doi.org/10.1515/nleng-2017-0145>.
- [7] Singh J, Kumar D, Baleanu D. An efficient numerical algorithm for the fractional Drinfeld–Sokolov–Wilson equation. *Applied Mathematics and Computation*. 2018;335:12-24.
- [8] Wazwaz AM. The tanh-coth method for new compactons and solitons solutions for the $K(n,n)$ and $K(n+1, n+1)$ equations, persive $K(m,n)$ equations. *Appl. Math. Comput*. 2007;188:1930-1940.
- [9] Wang ML. Exact solutions for a compound Käv- Burgers equation. *Phys. Lett. A*. 1996;213:279-287.

- [10] Fan E. Extended tanh-function method and its applications to nonlinear equations. Phys. Lett. A. 2000;277:212-218.
- [11] Fan E, Zhang J. A note on the homogeneous balance method. Phys. Lett. A. 2002;305:383-392.
- [12] Zhou YB, Wang ML, Wang YM. Periodic wave solutions to a coupled KdV equations with variable coefficients. Phys. Lett. A. 2003;308:31-37.
- [13] Wazwaz AM. Solutions of compact and non compact structures for nonlinear Klein-Gordon type equation. Appl. Math. Comput. 2003;134:487-500.
- [14] Wazwaz AM. Traveling wave solutions of generalized forms of Burgers – KdV and Burgers Huxly equations. Appl. Math. Comput. 2005;169:639-656.
- [15] Feng Z. The first integral method to study the Burgers – Korteweg-de-Vries equation. J. Phys. Lett. A. 2002;35:343-349.
- [16] Feng Z. On explicit exact solutions for the Lienard equation and its applications. J. Phys. Lett. A. 2002;293:57-66.
- [17] Feng Z. On explicit exact solutions to compound Burgers- KdV equation. J. Math. Anal. Appl. 2007;328:1435-1450.
- [18] Bogning JR, Djeumen Tchaho CT, Kofané TC. Construction of the soliton solutions of the Ginzburg-Landau equations by the new Bogning-Djeumen Tchaho-Kofané method. Phys. Scr. 2012;85:025013-025017.
- [19] Bogning JR, Djeumen Tchaho CT, Kofané TC. Generalization of the Bogning- Djeumen Tchaho-Kofane method for the construction of the solitary waves and the survey of the instabilities. Far East J. Dyn. Sys. 2012;20(2):101-119.
- [20] Djeumen Tchaho CT, Bogning JR, Kofané TC. Modulated soliton solution of the modified Kuramoto-Sivashinsky's equation. American Journal of Computational and Applied Mathematics. 2012;2(5): 218-224.
- [21] Djeumen Tchaho CT, Bogning JR, Kofane TC. Multi-soliton solutions of the modified Kuramoto-Sivashinsky's equation by the BDK method. Far East J. Dyn. Sys. 2011;15(2):83-98.
- [22] Djeumen Tchaho CT, Bogning JR, Kofane TC. Construction of the analytical solitary wave solutions of modified Kuramoto-Sivashinsky equation by the method of identification of coefficients of the hyperbolic functions. Far East J. Dyn. Sys. 2010;14(1):14-17.
- [23] Bogning JR. Pulse soliton solutions of the modified KdV and Born-Infeld equations. International Journal of Modern Nonlinear Theory and Application. 2013;2:135-140.

© 2019 Guy and Bogning; This is an Open Access article distributed under the terms of the Creative Commons Attribution License (<http://creativecommons.org/licenses/by/4.0>), which permits unrestricted use, distribution, and reproduction in any medium, provided the original work is properly cited.

Peer-review history:

The peer review history for this paper can be accessed here (Please copy paste the total link in your browser address bar)

<http://www.sdiarticle3.com/review-history/43376>