



# Synaptic Remodeling in the Cone Pathway After Early Postnatal Horizontal Cell Ablation

Lena Nemitz<sup>1\*</sup>, Karin Dedek<sup>2,3</sup> and Ulrike Janssen-Bienhold<sup>1,3</sup>

<sup>1</sup> Visual Neuroscience, Department of Neuroscience, University of Oldenburg, Oldenburg, Germany, <sup>2</sup> Animal Navigation/Neurosensorys, Institute for Biology and Environmental Sciences, University of Oldenburg, Oldenburg, Germany, <sup>3</sup> Research Center Neurosensory Science, University of Oldenburg, Oldenburg, Germany

## OPEN ACCESS

### Edited by:

Dirk Feldmeyer,  
Helmholtz-Verband Deutscher  
Forschungszentren (HZ), Germany

### Reviewed by:

Nicholas Brecha,  
University of California, Los Angeles,  
United States

Benjamin E. Reese,

University of California,

Santa Barbara, United States

Serge Picaud,

Institut National de la Santé et de la  
Recherche Médicale (INSERM) U968

Institut de la Vision, Université de la  
Sorbonne, France

### \*Correspondence:

Lena Nemitz  
lena.nemitz@uni-oldenburg.de

### Specialty section:

This article was submitted to  
Cellular Neurophysiology,  
a section of the journal  
Frontiers in Cellular Neuroscience

**Received:** 23 January 2021

**Accepted:** 03 May 2021

**Published:** 26 May 2021

### Citation:

Nemitz L, Dedek K and  
Janssen-Bienhold U (2021) Synaptic  
Remodeling in the Cone Pathway  
After Early Postnatal Horizontal Cell  
Ablation.  
*Front. Cell. Neurosci.* 15:657594.  
doi: 10.3389/fncel.2021.657594

The first synapse of the visual pathway is formed by photoreceptors, horizontal cells and bipolar cells. While ON bipolar cells invaginate into the photoreceptor terminal and form synaptic triads together with invaginating horizontal cell processes, OFF bipolar cells make flat contacts at the base of the terminal. When horizontal cells are ablated during retina development, no invaginating synapses are formed in rod photoreceptors. However, how cone photoreceptors and their synaptic connections with bipolar cells react to this insult, is unclear so far. To answer this question, we specifically ablated horizontal cells from the developing mouse retina. Following ablation around postnatal day 4 (P4)/P5, cones initially exhibited a normal morphology and formed flat contacts with OFF bipolar cells, but only few invaginating contacts with ON bipolar cells. From P15 on, synaptic remodeling became obvious with clustering of cone terminals and mislocalized cone somata in the OPL. Adult cones (P56) finally displayed highly branched axons with numerous terminals which contained ribbons and vesicular glutamate transporters. Furthermore, type 3a, 3b, and 4 OFF bipolar cell dendrites sprouted into the outer nuclear layer and even expressed glutamate receptors at the base of newly formed cone terminals. These results indicate that cones may be able to form new synapses with OFF bipolar cells in adult mice. In contrast, cone terminals lost their invaginating contacts with ON bipolar cells, highlighting the importance of horizontal cells for synapse maintenance. Taken together, our data demonstrate that early postnatal horizontal cell ablation leads to differential remodeling in the cone pathway: whereas synapses between cones and ON bipolar cells were lost, new putative synapses were established between cones and OFF bipolar cells. These results suggest that synapse formation and maintenance are regulated very differently between flat and invaginating contacts at cone terminals.

**Keywords:** bipolar cells, horizontal cells, photoreceptors, cones, ribbon synapse, synaptic remodeling, retina, vision

## INTRODUCTION

At the visual system's first synapse, cone photoreceptors provide synaptic input to horizontal cells, ON bipolar cells and OFF bipolar cells, thereby splitting the light information into parallel pathways. Two different types of contacts can be distinguished at the cone terminal: Invaginating contacts with horizontal and ON bipolar cells (triads) and flat contacts with OFF bipolar cells (Haverkamp et al., 2000). Previous electron microscopic studies have revealed the chronological sequence of cone synaptogenesis in the mouse retina

(Olney, 1968; Blanks et al., 1974; Rich et al., 1997; Sherry et al., 2003). When cone terminals begin to invade the outer plexiform layer (OPL) at postnatal day 4 (P4)/P5, the ribbon, a specialized structure that binds synaptic vesicles and enables a rapid and graded release of glutamate, is attached to the membrane and the cone terminal makes a contact with one horizontal cell dendrite. Starting at P6, this dendrite invaginates into the cone pedicle together with a second horizontal cell dendrite and both horizontal cell processes are positioned lateral to the ribbon. Between P7 and P10, triads are completed by the addition of one or two ON bipolar cell dendrites that occupy the central position below the synaptic ribbon.

Although the chronological order of cone synapse formation is well-described, the molecular mechanisms that underlie this process are not fully understood. Recently, the dystroglycan-pikachurin complex of photoreceptors has been reported to interact transsynaptically with GPR179, a G protein-coupled receptor that is expressed at the dendritic tips of ON bipolar cells (Orlandi et al., 2018). The knock-out of dystroglycan (Satz et al., 2009; Omori et al., 2012) and pikachurin (Sato et al., 2008) leads to improper photoreceptor synapse formation and visual impairment. Moreover, an ablation of horizontal cells from the adult retina results in a loss of synaptic contacts between photoreceptors and ON bipolar cells (Sonntag et al., 2012; Keeley et al., 2013; Wu et al., 2013) and an elimination of horizontal cells during early postnatal development impedes the invagination of rod bipolar cells into rod terminals (Nemitz et al., 2019). However, it remains unclear how cones and cone bipolar cells react when horizontal cells are ablated during development.

In the present study, we analyzed the effects of an early postnatal loss of horizontal cells on the morphology of cone photoreceptors and their synaptic contacts with bipolar cells. For this purpose, horizontal cells were specifically ablated from the mouse retina around P4/P5 (at the time when horizontal cells start to make the first contacts with cone pedicles) using diphtheria toxin receptor (DTR)-mediated cell knock-out. Our immunohistochemical and electron microscopic analysis showed that cones initially displayed a normal morphology and established flat contacts with OFF bipolar cells, but only few invaginating synapses with ON bipolar cells. Beginning at P15, cone somata were partly mislocalized and cone terminals clustered in the OPL and lost all invaginating ON bipolar cell invaginations. In the adult retina, cones and their postsynaptic partners underwent even more severe structural changes, including an aberrant cone neurite sprouting and a formation of new putative synapses between cones and OFF bipolar cells. These findings demonstrate the potential of the adult retina for morphological plasticity and highlight again the importance of horizontal cells for the maintenance of invaginating synapses (Sonntag et al., 2012).

## MATERIALS AND METHODS

### Animals

Cx57-DTR<sup>fl</sup> mice which express the primate DTR (kind gift from Dr. T. Buch, TU München, Munich, Germany)

under the control of the endogenous connexin57 (Cx57) promoter have been previously described (Sonntag et al., 2012) and can be obtained from the European Mouse Mutant Archive (EM:06024). Mice were backcrossed into the C57BL/6J background for at least three generations. Animals were maintained under a 12 h light/dark cycle with food and water *ad libitum*. Mice of both sexes were used in the experiments. All procedures were approved by the local animal welfare committee (Niedersächsisches Landesamt für Verbraucherschutz und Lebensmittelsicherheit, Az:33.19-542502-04-12/0995) and were in accordance with the law on animal protection issued by the German Federal Government (Tierschutzgesetz).

### DT Injections

Cx57<sup>+/DTR</sup> and Cx57<sup>+/+</sup> (control) littermates were injected intraperitoneally with 12.5–20 ng DT (Sigma) at P4 and P5.

### Tissue Preparation

Tissue preparation was done as previously described in Nemitz et al. (2019). Briefly, mice were killed by decapitation (P8 and P11) or anesthetized with CO<sub>2</sub> and killed by cervical dislocation (P15, P21, and P56). Eyes were enucleated, transferred into physiological phosphate buffer saline (pH 7.4) and cornea, lens and vitreous body were removed. For immunohistochemistry of retinal cryosections, posterior eyecups were fixed in 2% paraformaldehyde (PFA) and 3% sucrose in 0.1 M phosphate buffer (PB, pH 7.4) for 20 min and washed in 0.1 M PB. After cryoprotection in 30% sucrose in 0.1 M PB overnight at 4°C, eyecups were embedded in Tissue-Tek O.C.T. Compound (Sakura Finetek) and cut into vertical sections (20 μm) using a cryostat (Leica CM1860). For immunohistochemistry of whole mounts, retinae were isolated from the eyecups, mounted on filter paper ganglion cell side up and fixed with 2% PFA and 3% sucrose in 0.1 M PB for 20 min. After washing in 0.1 M PB, retinae were cryoprotected in 30% sucrose in 0.1 M PB overnight at 4°C and subjected to three freeze-thaw cycles. For electron microscopy, isolated retinae were fixed in 1% PFA, 3% sucrose and 2.5% glutaraldehyde in 0.05 M PB overnight at 4°C, washed in 0.1 M PB and post-fixed with 1% OsO<sub>4</sub> in 0.1 M PB for 1 h.

### Immunohistochemistry and Image Acquisition

Immunostainings were performed as described earlier (Nemitz et al., 2019). Cryosections and whole mounts of Cx57<sup>+/+</sup> ( $n = 3-6$ ) and Cx57<sup>+/DTR</sup> ( $n = 3-6$ ) mice were washed in 0.1 M PB and blocked with 5% ChemiBLOCKER (Millipore), 0.3% Triton X-100 and 0.02% NaN<sub>3</sub> in 0.1 M PB for 1 h at room temperature (cryosections) or overnight at 4°C (whole mounts). Primary antibodies (Table 1) were diluted in blocking solution and applied overnight (cryosections) or for 5 days (whole mounts) at 4°C. After washing in 0.1 M PB, tissue was incubated with secondary antibodies (conjugated to Alexa 488, Alexa 588 or Alexa 647, Thermo Fisher Scientific, 1:600) in blocking solution for 2 h at room temperature (cryosections) or 2 days (whole mounts) at 4°C. Finally, cryosections and whole mounts were washed in 0.1 M PB and mounted in Vectashield (Vector Laboratories).

Images were acquired using a confocal laser scanning microscope (Leica TCS SP8). Retinal sections were scanned with an HC PL APO CS2 63x/1.4 oil objective. Whole mounts were scanned with an HC PL APO CS2 40x/1.3 oil objective. Maximum projections of confocal stacks (0.2  $\mu\text{m}$  single scans) are shown. Brightness and contrast were adjusted for presentation purposes using Fiji (Schindelin et al., 2012).

## Electron Microscopy

As earlier described (Nemitz et al., 2019), fixed retinæ of  $Cx57^{+/+}$  ( $n = 2-4$ ) and  $Cx57^{+/DTR}$  mice ( $n = 3-5$ ) were washed in 0.1 M PB and dehydrated in increasing acetone concentrations (50–100%). After embedding in Agar 100 Resin (Agar Scientific), retinæ were sectioned vertically (90 nm) using a Reichert-Jung Ultracut E ultramicrotome. Ultrathin sections were collected on copper grids and examined with a Zeiss EM 902A electron microscope. Brightness and contrast of electron micrographs were adjusted in Adobe Photoshop CS6 Extended (Adobe Systems).

## Quantification and Statistical Analysis

For the quantification of cones, we counted the number of cone somata in cone arrestin-stained vertical sections of  $Cx57^{+/+}$  ( $n = 3$ ) and  $Cx57^{+/DTR}$  ( $n = 3$ ) mice. For each animal, 12 images ( $198.39 \times 198.39 \mu\text{m}$ ) were analyzed. Cones that had their soma within the distal 50% of the ONL were categorized as correctly positioned cones and cones that had their soma within the proximal 50% of the ONL, the INL or the OPL were categorized as mislocalized cones.

Data were analyzed in GraphPad Prism 5 (GraphPad Software). Numbers of cones were normally distributed (D'Agostino-Pearson normality test). Therefore, differences between genotypes were tested for statistical significance using an unpaired *t*-test. To compare the distribution of cone somata in wild-type and horizontal cell-ablated mice, Fisher's exact test was used. Values are given as mean  $\pm$  standard deviation (SD).

**TABLE 1** | List of primary antibodies used in this study.

Antibody	Host, type	Dilution	Source, Catalog #, RRID
Calbindin D-28k	Rabbit, polyclonal	1:500	Swant, CB-38, AB_2721225
Cone arrestin	Rabbit, polyclonal	1:1,000	Millipore, AB15282, AB_1163387
Calsenilin	Mouse, monoclonal	1:2,000	Millipore, 05-756, AB_309969
CtBP2	Mouse, monoclonal	1:5,000	BD Biosciences, 612044, AB_399431
Ca <sub>v</sub> 1.1	Mouse, monoclonal	1:500	Millipore, MAB427, AB_2069582
GluK1	Mouse, monoclonal	1:200	Santa Cruz Biotechnology, sc-393420, AB_2716684
HCN4	Rat, polyclonal	1:100	Gift from Frank Müller (FZ Jülich, Jülich, Germany)
PKAR1 $\beta$	Mouse, monoclonal	1:1,500	BD Biosciences, 610625, AB_397957
SCGN	Sheep, polyclonal	1:1,000	BioVendor Laboratory Medicine, RD184120100, AB_2034062
VGlut1	Guinea pig, polyclonal	1:2,000	Millipore, AB5905, AB_2301751

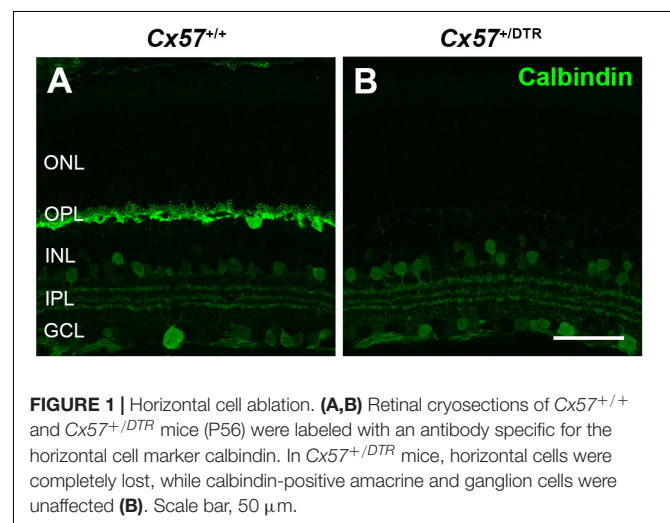
## RESULTS

### Ablation of Horizontal Cells

To investigate how cones and their postsynaptic partners respond to a loss of horizontal cells during early postnatal development, we ablated horizontal cells via DTR-mediated cell knock-out (Saito et al., 2001). To this end, we used  $Cx57^{+/DTR}$  mice that selectively express the DTR from primates selectively in horizontal cells (Sonntag et al., 2012) and induced an apoptosis of horizontal cells by the injection of DT at P4 and P5 (Nemitz et al., 2019). At that time, cone synaptogenesis has just started and cone terminals begin to form the first contacts with horizontal cells (Sherry et al., 2003). To confirm the ablation of horizontal cells, vertical sections of  $Cx57^{+/+}$  and  $Cx57^{+/DTR}$  retinæ were stained for calbindin, a marker for horizontal cells. Calbindin-positive horizontal cells were present in DT-injected  $Cx57^{+/+}$  mice (**Figure 1A**) and absent in DT-injected  $Cx57^{+/DTR}$  mice (**Figure 1B**). In contrast, calbindin-immunoreactive inner retinal neurons were comparable in both genotypes (**Figures 1A,B**).

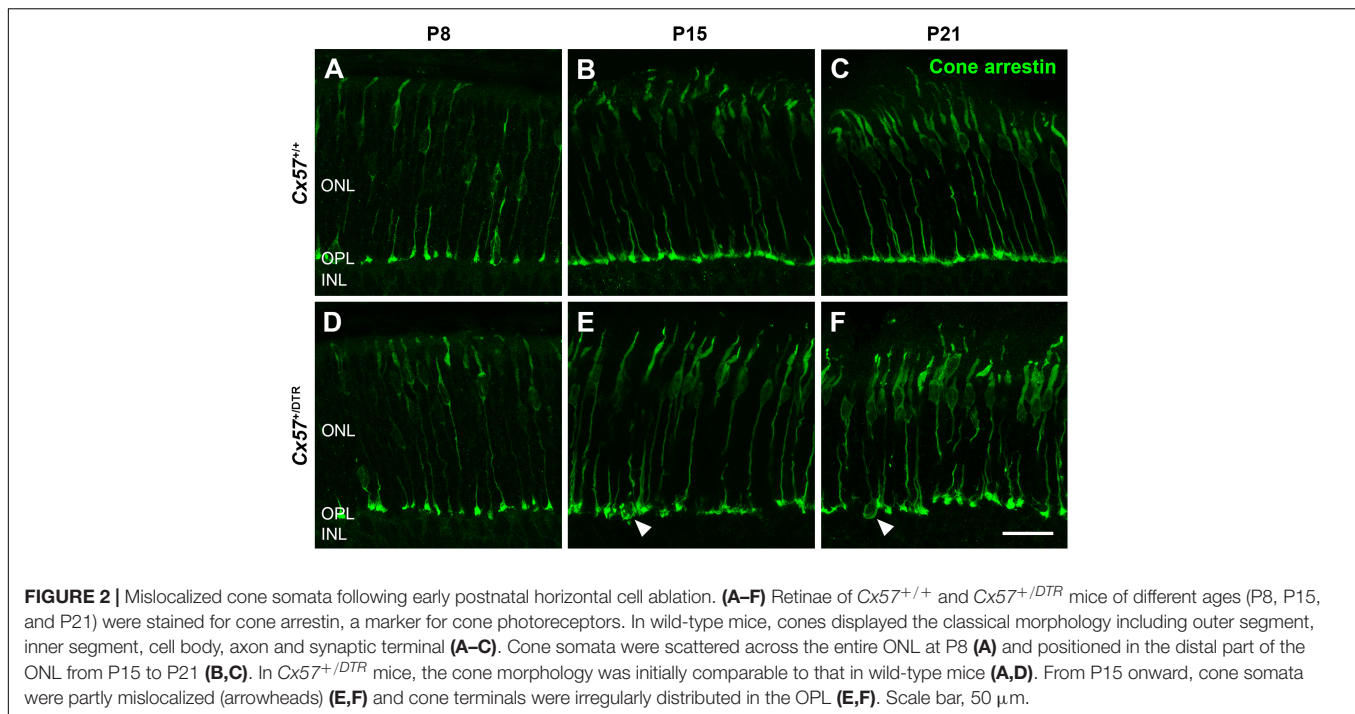
### Cone Neurite Sprouting After Early Postnatal Horizontal Cell Ablation

To monitor the development of cone morphology after horizontal cell ablation, we stained retinal cryosections of  $Cx57^{+/+}$  and  $Cx57^{+/DTR}$  mice (P8, P15, and P21) with an antibody against cone arrestin. In wild-type mice, cones showed the typical morphology composed of an outer and inner segment, a soma and an axon with a synaptic terminal (**Figures 2A–C**). During the second postnatal week, cone photoreceptors undergo a phase of translocation before they occupy their final position in the distal ONL (Rich et al., 1997). Accordingly, cone somata were distributed over the entire ONL width in  $Cx57^{+/+}$  mice at P8 (**Figure 2A**) but located in the outermost part of the ONL from P15 onward (**Figures 2A–C**). At P8, the morphology of cones and the distribution of cone somata in horizontal cell-ablated mice was undistinguishable from that in control mice (**Figures 2A,D**). Beginning at P15, however, we found mislocalized cone somata

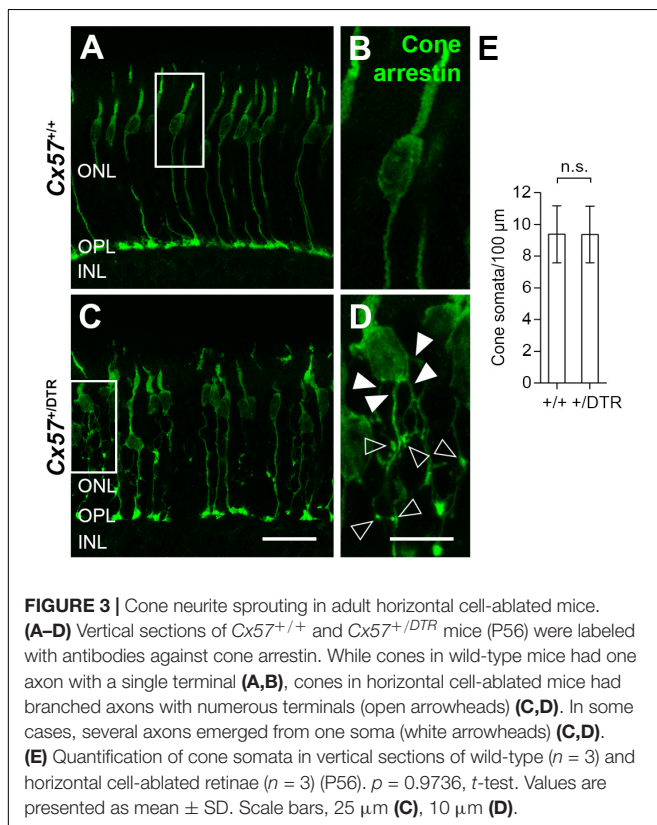


**FIGURE 1** | Horizontal cell ablation. **(A,B)** Retinal cryosections of  $Cx57^{+/+}$  and  $Cx57^{+/DTR}$  mice (P56) were labeled with an antibody specific for the horizontal cell marker calbindin. In  $Cx57^{+/+}$  mice, horizontal cells were completely lost, while calbindin-positive amacrine and ganglion cells were unaffected **(B)**. Scale bar, 50  $\mu\text{m}$ .



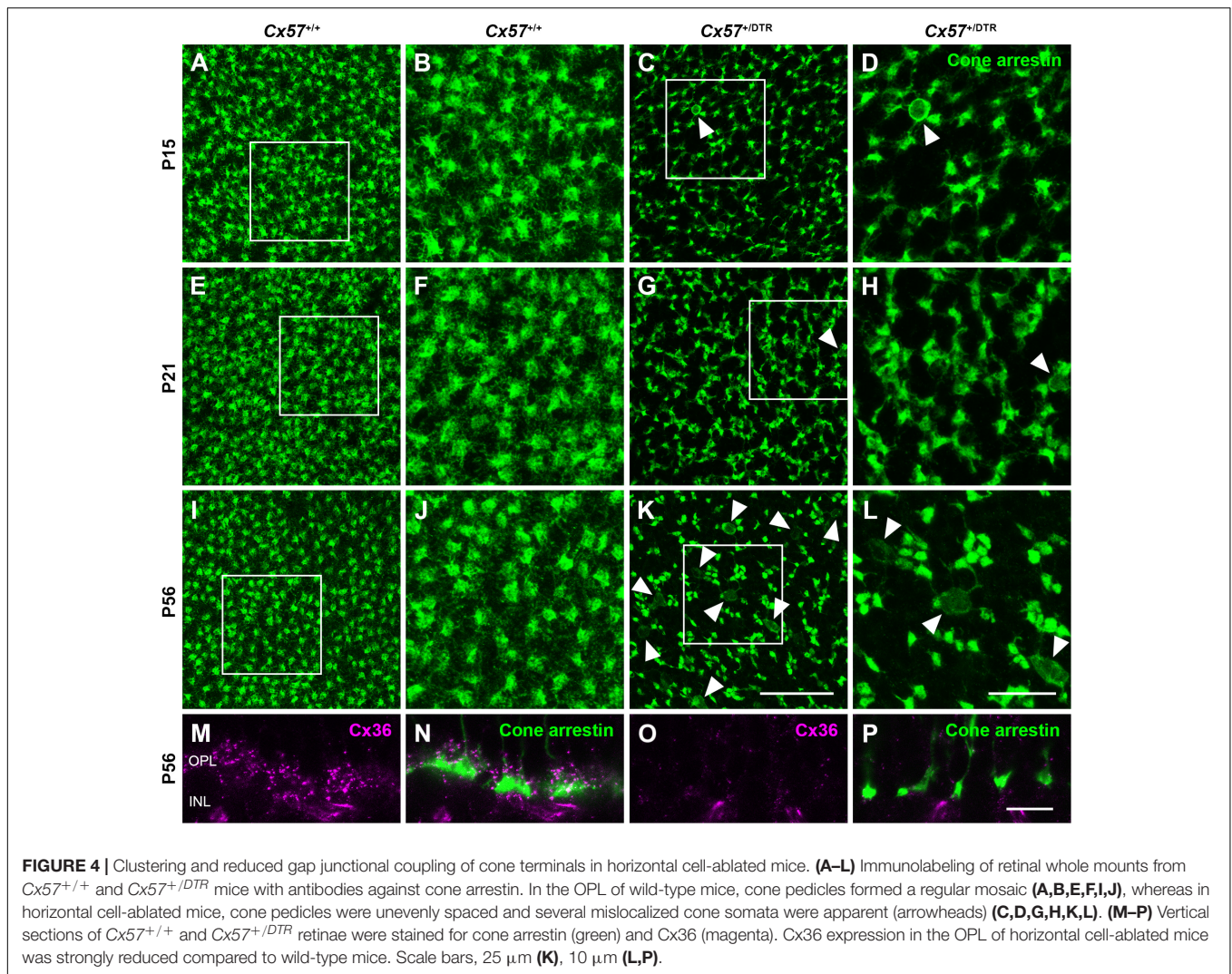


at the level of the OPL (**Figures 2E,F**, arrowheads). Furthermore, cone terminals appeared to be irregularly spaced and seemed to start forming clusters (**Figures 2E,F**). At P56, differences in



the morphology of cones in *Cx57<sup>+/+</sup>* and *Cx57<sup>+ /DTR</sup>* mice became even more evident (**Figures 3A–D**). Occasionally, two or more axons emerging from one soma were observed (**Figure 3D**, white arrowheads). Moreover, axons showed branching into several collaterals with small and often more slender appearing terminals (**Figure 3D**, open arrowheads). The appearance of several terminals in one cone cell at P56 suggests that cones formed new terminals in adult mice. Despite these morphological changes, the number of cones did not differ between the two genotypes at P56 (**Figure 3E**; *Cx57<sup>+/+</sup>*:  $9.38 \pm 1.80$  cone somata per 100  $\mu\text{m}$ ; mean  $\pm$  SD; *Cx57<sup>+ /DTR</sup>*:  $9.37 \pm 1.78$  cone somata per 100  $\mu\text{m}$ ,  $p = 0.9736$ ,  $t$ -test), indicating that cones did not undergo cell death. In contrast to the number of cones, the distribution of cone somata across the depth of the ONL was significantly different between *Cx57<sup>+/+</sup>* and *Cx57<sup>+ /DTR</sup>* mice at P56 ( $p = 0.0309$ , Fisher's exact test). In wild-type mice, all analyzed cone somata (670/670) were localized in the distal ONL, whereas in horizontal cell-ablated mice, 99.3% (664/669) of the cone somata were correctly positioned and 0.7% (5/669) of the cone somata were found mispositioned in the proximal ONL, distal INL, or OPL. Immunolabeling of retinal whole mounts for cone arrestin confirmed that the regular mosaic of cone terminals found at P15, P21 and P56 in the OPL of control mice (**Figures 4A,B,E,F,I–L**) was absent in age-matched *Cx57<sup>+ /DTR</sup>* mice. Instead, cone pedicles were unevenly distributed and formed clusters (**Figures 4C,D,G,H,K,L**). In addition, cone terminals appeared smaller and the telodendrial network seemed to be reduced (**Figures 4C,D,G,H,K,L**). Consistently, the immunoreactivity for the gap junction protein Connexin36 (Cx36) in the OPL of horizontal cell-ablated mice was strongly decreased (**Figures 4M–P**), suggesting that gap junctional coupling between photoreceptors is disrupted. In





addition to that, peanut agglutinin (PNA) labeling in the OPL was considerably reduced, which indicates that the extracellular matrix at cone terminals is altered in *Cx57<sup>+/DTR</sup>* retinæ (**Supplementary Figure 1**).

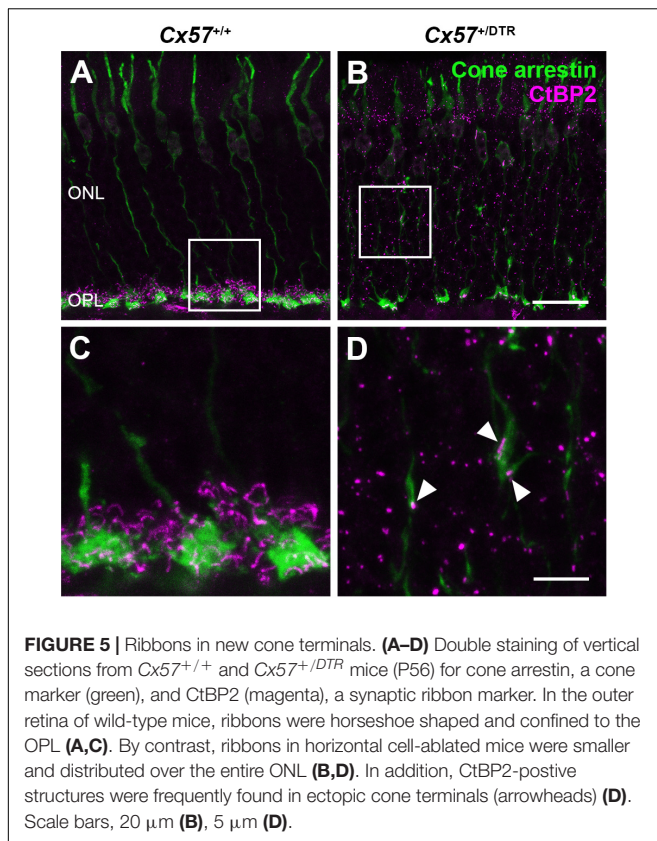
### New Cone Terminals Contain Ribbons and Vesicular Glutamate Transporters

To check whether the newly formed cone terminals in adult *Cx57<sup>+/DTR</sup>* mice (P56) have synaptic ribbons, we labeled cones with antibodies specific for cone arrestin and ribbons with antibodies specific for CtBP2, a protein that is identical to the B domain of the ribbon component RIBEYE (Schmitz et al., 2000). Ribbons in the outer retina of control mice displayed the classical horseshoe shape and were restricted to the OPL (**Figures 5A,C**). By contrast, ribbons of *Cx57<sup>+/DTR</sup>* mice were shorter as evidenced by a punctate CtBP2 labeling and not only present in the OPL, but predominately distributed throughout the entire ONL (**Figures 5B,D**). Furthermore, the double labeling revealed that ribbons were often present within slender ectopic cone terminals in the ONL (**Figure 5D**, arrowheads). In addition

to that, we stained retinæ from wild-type and horizontal cell-ablated mice (P56) for cone arrestin and vesicular glutamate transporter 1 (VGluT1), which is responsible for the uptake of glutamate into synaptic vesicles and expressed in photoreceptor terminals (Johnson et al., 2003; Sherry et al., 2003; **Figures 6A–F**). In *Cx57<sup>+/+</sup>* and *Cx57<sup>+/DTR</sup>* mice, vGluT1 immunoreactivity was present in cone pedicles in the OPL (**Figures 6A–I**). Similar to the CtBP2 labeling, VGluT1 labeling was also found in ectopic cone terminals in the ONL (**Figures 6J–L**, arrowheads). Taken together, these findings demonstrate that newly formed cone terminals possess synaptic elements that are critical for glutamate release of photoreceptors.

### Cone Terminals Lose Invaginations From ON Bipolar Cells

For the examination of synapses between cones and ON bipolar cells we analyzed cone terminals from wild-type and horizontal cell-ablated mice of different ages (P11, P15, and P56) by electron microscopy. In *Cx57<sup>+/+</sup>* mice, triads comprising horizontal and ON bipolar cell dendrites were present at all analyzed



**FIGURE 5 |** Ribbons in new cone terminals. **(A–D)** Double staining of vertical sections from *Cx57<sup>+/+</sup>* and *Cx57<sup>+/DTR</sup>* mice (P56) for cone arrestin, a cone marker (green), and CtBP2 (magenta), a synaptic ribbon marker. In the outer retina of wild-type mice, ribbons were horseshoe shaped and confined to the OPL **(A,C)**. By contrast, ribbons in horizontal cell-ablated mice were smaller and distributed over the entire ONL **(B,D)**. In addition, CtBP2-positive structures were frequently found in ectopic cone terminals (arrowheads **(D)**). Scale bars, 20  $\mu\text{m}$  **(B)**, 5  $\mu\text{m}$  **(D)**.

time points (**Figures 7A,E,I**). Although horizontal cell ablation was already induced at P4/P5, we occasionally found remnants from horizontal cell invaginations in *Cx57<sup>+/DTR</sup>* mice at P11 (**Figure 7B**). However, complete triads were rare (**Figure 7C**) and most of the cone terminals revealed a complete lack of invaginations (**Figure 7D**), suggesting that horizontal cells may not only be essential for the invagination of rod bipolar cells into rod terminals (Nemitz et al., 2019), but also for the invagination of cone ON bipolar cells into cone terminals. At P15 and P56, cone pedicles of horizontal cell-ablated mice did not show any invaginations (**Figures 7F–H,J–L**), indicating that cones have lost the remaining contacts with ON bipolar cells. In line with the CtBP2 labeling (**Figures 5B,D**), synaptic ribbons in *Cx57<sup>+/DTR</sup>* mice were often shorter and not anchored to the cell membrane (**Figures 7B–D,F–H,J–L**, arrowheads). Unfortunately, we were not able to unambiguously identify newly formed cone terminals in electron micrographs since ectopic rod terminals are also present in the ONL of horizontal cell-ablated mice (Nemitz et al., 2019) and common criteria for the differentiation between rod and cone terminals such as the terminal size or the number of mitochondria, ribbons and invaginations were not applicable for ectopic rod and cone terminals in horizontal cell-ablated mice.

To confirm the absence of synaptic contacts between cones and ON bipolar cells in adult *Cx57<sup>+/DTR</sup>* mice (P56), we stained the mGluR6 signaling complex with an antibody against  $\text{Ca}_v1.1$ , that cross-reacts with GPR179 (Hasan et al., 2016). Additionally, we labeled cones with an antibody against cone arrestin and a

subset of cone bipolar cells with an antibody against secretagogin (SCGN, Puthussery et al., 2010). While GPR179-positive puncta were found at contact points between cone terminals and secretagogin-immunoreactive bipolar cells in *Cx57<sup>+/+</sup>* mice (**Figures 8A–D**, arrowheads), GPR179 labeling was completely missing in *Cx57<sup>+/DTR</sup>* mice (**Figures 8E–H**), suggesting that functional synapses between cones and ON bipolar cells are indeed absent in adult horizontal cell ablated mice.

## Sprouting OFF Bipolar Cell Dendrites Form New Contacts With Cones

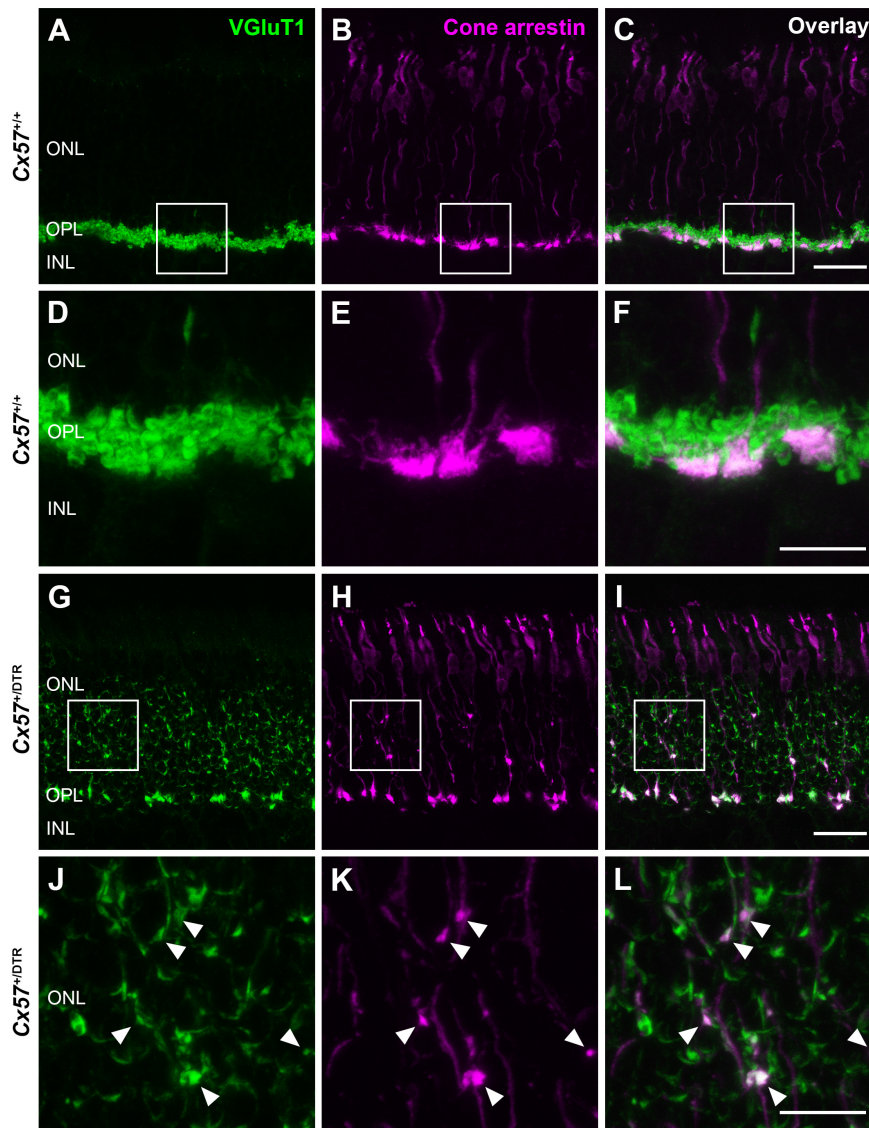
Cone photoreceptors provide synaptic input to five types of OFF bipolar cells (Behrens et al., 2016). To analyze the effects of early postnatal horizontal cell ablation on OFF bipolar cell morphology, we labeled type 3a, 3b, and 4 OFF bipolar cells with antibodies against HCN4, PKARII $\beta$  and calsenilin, respectively. In the adult (P56) wild-type retina, type 3a, 3b, and 4 OFF bipolar cell dendrites exclusively stratified in the OPL (**Figures 9A–C**). In the horizontal cell-ablated retina, on the contrary, all analyzed types of OFF bipolar cells extended their dendrites into the ONL (**Figures 9D–F**, arrowheads).

Since type 3a, 3b, and 4 OFF bipolar cells not only contact cones but also rods (Mataruga et al., 2007; Haverkamp et al., 2008) and rods have been shown to retract their terminals into the ONL after early postnatal horizontal cell ablation (Nemitz et al., 2019), these OFF bipolar cell types may sprout into the ONL to search for contacts with rods. To test whether outgrowing OFF bipolar cell dendrites in horizontal cell-ablated mice are possibly able to form new synapses with cones, we stained vertical sections and whole mounts for cone arrestin and GluK1, a glutamate receptor subunit that is expressed by type 3a, 3b, and 4 OFF bipolar cells in the mouse retina (Puller et al., 2013). In *Cx57<sup>+/+</sup>* mice, GluK1 immunoreactivity was present at the base of cone terminals from P8 to P56 (**Figures 10A–D,I**), demonstrating that flat contacts with OFF bipolar cells were existing throughout all ages. Similarly, GluK1 staining was found at the base of cone terminals in the OPL of *Cx57<sup>+/DTR</sup>* mice from P8 onward (**Figures 10E–H,J**), suggesting that synapses between cones and OFF bipolar cells are normally formed and retained in horizontal cell-ablated mice. However, in addition to that, we observed several sprouting GluK1-immunoreactive dendrites adjacent to newly formed cone terminals in the ONL at P56 (**Figures 10H,H',K–N**). The GluK1 immunoreactivity was often accumulated at ectopic cone terminals (**Figures 10H',L,M**), indicating that OFF bipolar cells established new contacts with cones. Since newly formed cone terminals possess ribbons and vesicular glutamate transporters, presynaptic elements that are involved in the glutamate release of photoreceptors, and OFF bipolar cells express postsynaptic glutamate receptors at these terminals, it is highly likely that cones form new synapses with OFF bipolar cells in the adult retina.

## DISCUSSION

The present study aimed to investigate the consequences of early postnatal horizontal cell ablation on the development of





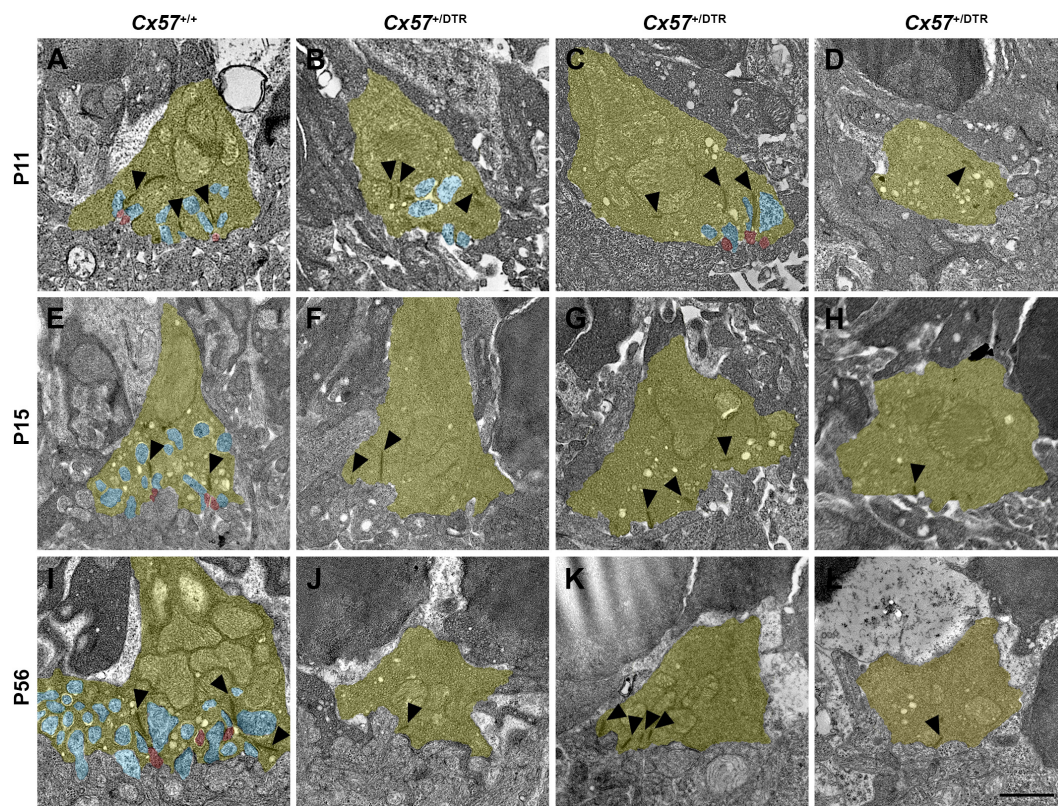
**FIGURE 6 |** New cone terminals express vesicular glutamate transporters. **(A–L)** Retinal cryosections of  $Cx57^{+/+}$  and  $Cx57^{+/DTR}$  mice (P56) were stained for the vesicular glutamate transporter VGlut1 (green) and cone arrestin (magenta). In wild-type and horizontal cell-ablated mice, cone pedicles in the OPL were VGlut1-positive **(A–I)**. Moreover, VGlut1 immunoreactivity was present within ectopic cone terminals in the ONL of  $Cx57^{+/DTR}$  mice (arrowheads) **(J,K,L)**. Scale bars, 25  $\mu\text{m}$  **(C,I)**, 10  $\mu\text{m}$  **(F,L)**.

cone photoreceptors and their synaptic connections with bipolar cells. Immunohistochemical and electron microscopical analysis revealed that cones initially displayed a normal morphology and formed basal contacts with OFF bipolar cells, but hardly any invaginating contacts with ON bipolar cells. Beginning in the third postnatal week, cones underwent progressive structural and synaptic changes, starting with a loss of synaptic contacts with ON bipolar cells, a mislocalization of cone somata and a clustering of cone terminals. The cone phenotype became even more severe in the adult retina with aberrant neurite sprouting and the establishment of new putative synapses with OFF bipolar cells. These results demonstrate the capacity of the mature retina for structural and synaptic plasticity.

### Loss of Synaptic Contacts Between Cones and ON Bipolar Cells

In this study, horizontal cell ablation was induced at the same time as the first contacts between cone terminals and horizontal cells are formed (P4/P5). Therefore, a small number of horizontal cell dendrites was still able to invaginate into cone terminals before horizontal cells were completely eliminated, as evidenced by the presence of some horizontal cell remnants in cone terminals at P11. However, invaginating ON bipolar cell dendrites were never observed without adjacent horizontal cell invaginations at this developmental stage, indicating that cone ON bipolar cells require horizontal cells to invaginate into the cone terminal. In line with this finding, horizontal





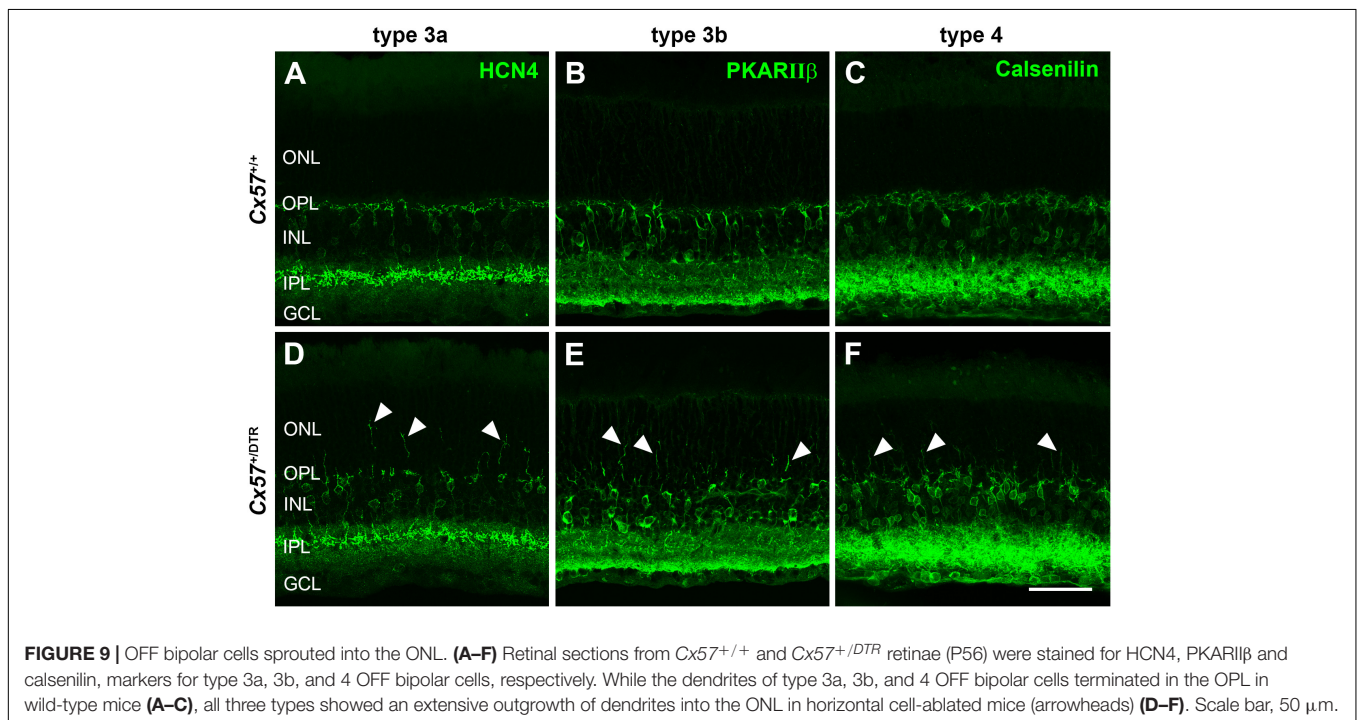
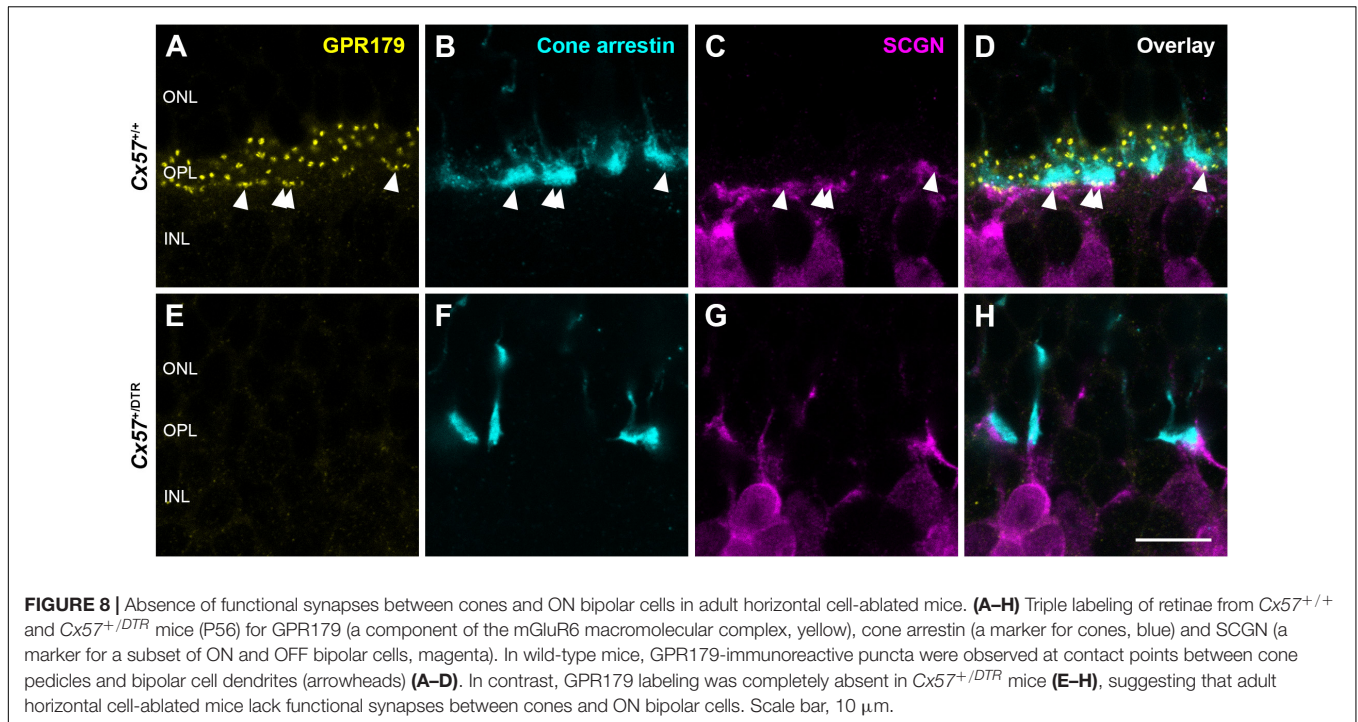
**FIGURE 7 |** Loss of ON bipolar cell invaginations in cone terminals. (A–L) Electron microscopic analysis of individual cone terminals from *Cx57<sup>+/+</sup>* and *Cx57<sup>+/DTR</sup>* mice at different ages (P11, P15, and P56). Cone terminals (yellow) in wild-type mice contained triads composed of horizontal cell dendrites (blue) and ON bipolar cell dendrites (red) as early as P11 (A,E,I). In horizontal cell-ablated mice, some cone terminals with horizontal cell invaginations were found at P11 (B). However, triads were rarely observed (C) and most cone pedicles contained no invaginations (D). At P15 and P56, cone terminals were generally lacking any invaginations in *Cx57<sup>+/DTR</sup>* mice (F–H,J–L). Ribbons were often shorter and free-floating (arrowheads) (B–D,F–H,J–L). Scale bar, 1  $\mu$ m.

cells have previously been shown to be essential for the invagination of rod bipolar cells into the rod terminal (Nemitz et al., 2019; **Figure 11**). From P15 onward, invaginations were completely absent in cone terminals of horizontal cell-ablated mice, suggesting that cones lose all remaining invaginations. This result is consistent with a previous study showing that synaptic contacts between photoreceptors and ON bipolar cells are also lost when horizontal cells are ablated from the adult retina (Sonntag et al., 2012), illustrating that horizontal cells are not only important for the formation, but also for the maintenance of the photoreceptor ribbon synapse. Nevertheless, the molecular mechanism, by which horizontal cells contribute to the formation and maintenance of photoreceptor ribbon synapses remains unresolved. One possibility is that horizontal cells express diffusible or membrane-bound guidance cue molecules that direct the invagination of ON bipolar cells into photoreceptor terminals or stabilize the photoreceptor ribbon synapse. Mouse horizontal cells have been reported to express the cell adhesion molecule NGL-2 (Soto et al., 2013) as well as the semaphorin Sema6a and its receptor PlexA4 (Matsuoka et al., 2012), but the knock-out of *Ngl-2*, *Sema6a* or *PlexA4* does not prevent the invagination of ON bipolar cells into the photoreceptor terminals, indicating that the absence of these molecules is

not responsible for the loss of photoreceptor ribbon synapses in horizontal cell-ablated mice. Another possibility is that the synaptic activity of horizontal cells contributes to the formation and maintenance of the photoreceptor ribbon synapse. Previous studies have shown that a loss of photoreceptor proteins that control the release of glutamate leads to a degeneration of photoreceptor ribbon synapses (Dick et al., 2003; Haeseleer et al., 2004; Mansergh et al., 2005; tom Dieck et al., 2012; Michalakakis et al., 2013). However, neither the absence of GABA synthesis (Schubert et al., 2010) nor the elimination of the light-dependent modulation of horizontal cell feedback and feedforward (Ströh et al., 2018) alters the ultrastructure of the photoreceptor ribbon synapse, suggesting that the synaptic activity of horizontal cells is not necessary for the assembly and maintenance of photoreceptor ribbon synapses.

### Cone Neurite Sprouting and Formation of New Putative Synapses Between Cones and OFF Bipolar Cells

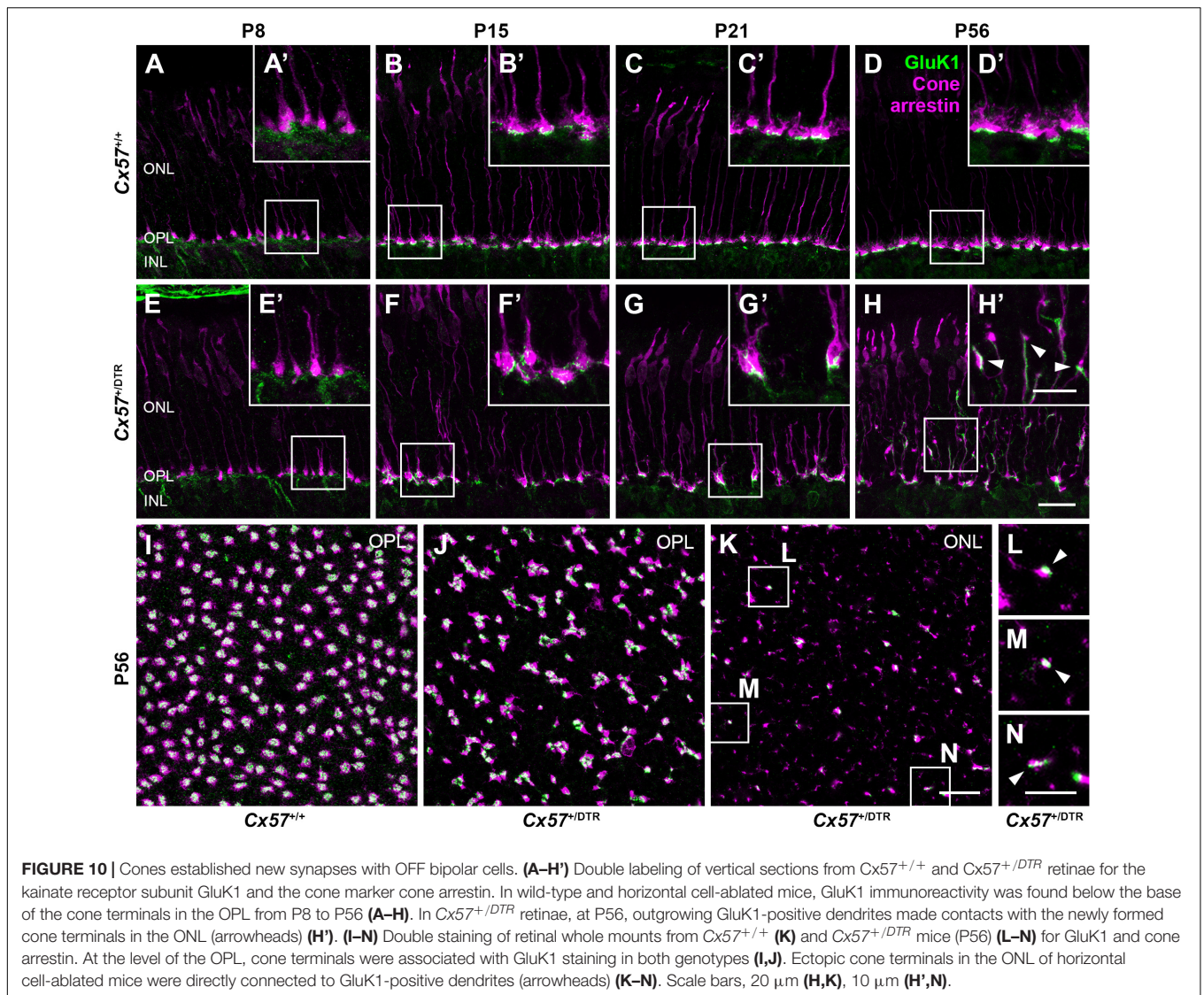
Aberrant sprouting of photoreceptor neurites has previously been reported for several retinal diseases in humans and animal models of retinal degenerations. Rod photoreceptors show



abnormal neurite sprouting in humans with retinitis pigmentosa (Li et al., 1995; Milam and Li, 1996; Fariss et al., 2000), cats with rod/cone dysplasia (Chong et al., 1999), and pigs carrying a mutation in the rhodopsin gene (Li et al., 1998). Furthermore, rods extend beaded axons into the inner retina after retinal detachment (Sethi et al., 2005) and reattachment (Lewis et al., 2002). Cone neurite sprouting has been described for humans

with retinitis pigmentosa (Li et al., 1995; Milam and Li, 1996) and age-related macular degeneration (AMD) (Pow and Sullivan, 2007) as well as for two mouse models: *rd1* (Fei, 2002; Lin et al., 2009) and *Ca<sub>v</sub>1.4* knock-out mice (Raven et al., 2008; Zabouri and Haverkamp, 2013). *Rd1* mice carry a mutation in the rod cGMP-specific 3',5'-cyclic phosphodiesterase  $\beta$  subunit gene leading to a primary degeneration of rod photoreceptors, followed by



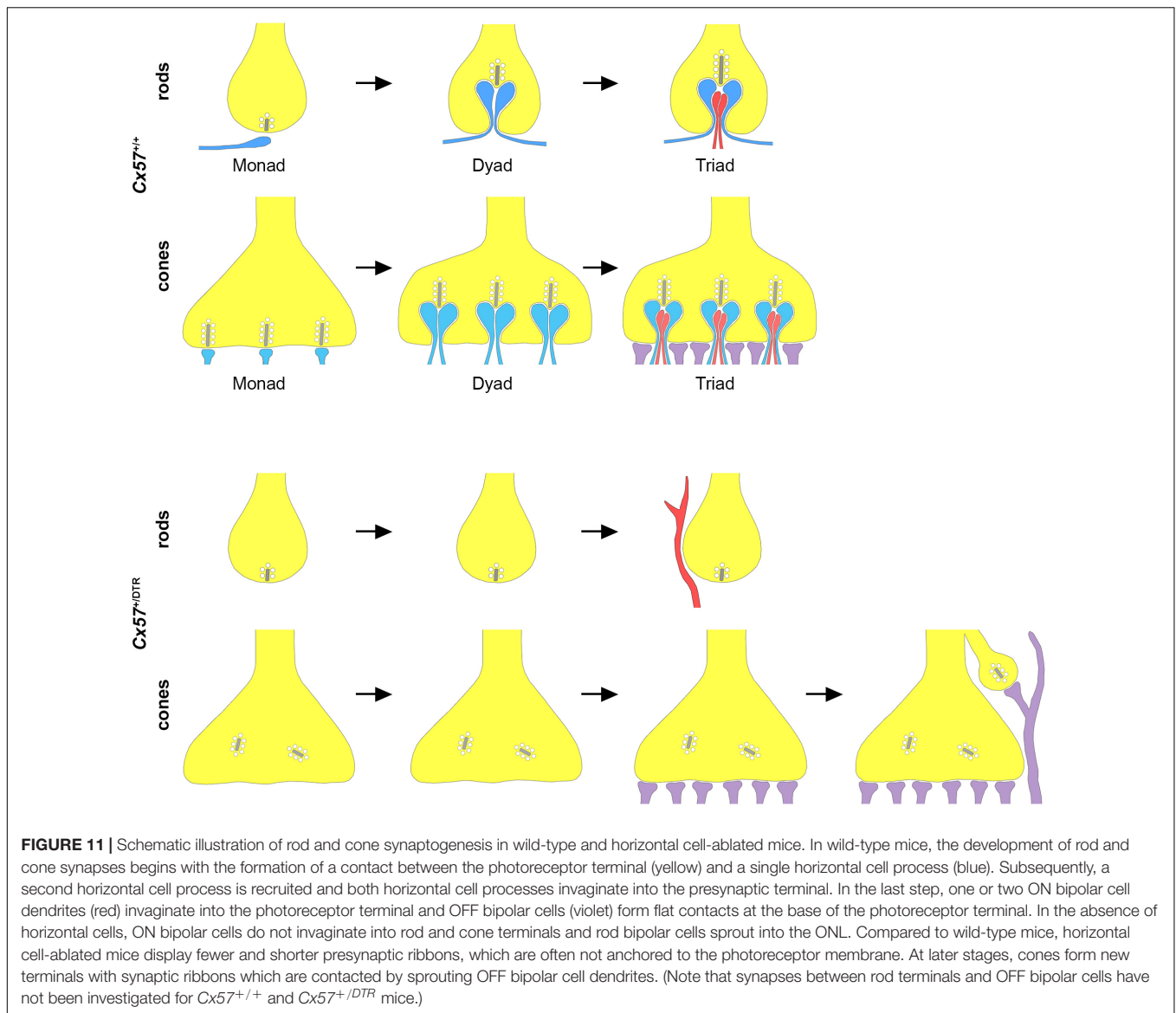


a secondary degeneration of cones and morphological changes in horizontal and bipolar cells (Strettoi and Pignatelli, 2000; Strettoi et al., 2002). In line with our findings, newly formed processes of cones in *rd1* mice often contain synaptic ribbons (Lin et al., 2009). Mice that lack the L-type voltage-dependent calcium channel subunit  $Ca_v1.4$ , which is expressed by photoreceptors, display severe structural changes including a loss of invaginations in photoreceptor terminals, abnormal ribbons and dendritic sprouting of second-order neurons (Mansergh et al., 2005; Raven et al., 2008; Zabouri and Haverkamp, 2013). Similar to horizontal cell-ablated mice, cones in  $Ca_v1.4$  mutant mice exhibit an aberrant morphology, showing branched axons and several synaptic terminals (Raven et al., 2008; Zabouri and Haverkamp, 2013). Furthermore, ectopic cone terminals have been shown to establish new synapses with horizontal cells (Zabouri and Haverkamp, 2013). In contrast to that, cone neurite sprouting has not been reported for adult *Lim1* conditional knock-out mice in which horizontal cells become misplaced to the inner retina

before birth (Poche et al., 2007; Keeley et al., 2013). However, due to incomplete recombination, some horizontal cells remain in the outer retina of *Lim1* conditional knock-out mice which might be sufficient to maintain the normal cone morphology or might induce subtler effects that went undetected. Interestingly, cones do also not display neurite sprouting when horizontal cells are ablated from the adult retina (Sonntag et al., 2012).

What causes cone neurite sprouting after early postnatal horizontal cell ablation? One possibility is that neurite sprouting is a sign for cone degeneration. In favor of this hypothesis are the data presented for *rd1* mice, which showed that neurite sprouting of cones starts at P8 (Fei, 2002) and coincides with the beginning of cone outer segment degeneration in this animal model (Lin et al., 2009). By contrast, in  $Ca_v1.4$  knock-out mice, neurite sprouting precedes cone death by several months (Zabouri and Haverkamp, 2013). Moreover, we did not find significant differences in the number of cones at P56 which speaks against this hypothesis. Nevertheless, we cannot rule out that





cones die at later stages in horizontal cell-ablated mice. Another reason for cone neurite sprouting after early postnatal horizontal cell ablation may be, that the loss of postsynaptic contacts with horizontal cells and ON bipolar cells triggers the neurite outgrowth and the search for new contacts. Axonal outgrowth and synapse formation rely on extracellular molecular cues that bind to membrane receptors and thereby activate intracellular signaling cascades which result in changes in cytoskeletal dynamics (reviewed in O'Donnell et al., 2009). However, the exact molecular mechanism of axonal outgrowth and synaptogenesis of cones is not yet fully understood. *In vitro* experiments with cultured salamander rod photoreceptors have demonstrated that the guidance cue molecule semaphorin 3A inhibits sprouting of rod photoreceptors (Kung et al., 2017). Murine horizontal cells have been reported to express semaphorin 6A (Sema6A), but in Sema6A knock-out mice, cones do not display aberrant neurite sprouting (Matsuoka et al., 2012), suggesting that the

lack of Sema6A is not responsible for cone neurite sprouting in horizontal cell-ablated mice. Moreover, it has been shown that blockage of cGMP-gated channels with cobalt bromide or L-cis diltiazem inhibits neurite outgrowth and varicosity formation whereas activation of cGMP-gated channels with the agonist 8Br-cGMP increases varicosity formation of cones (Zhang and Townes-Anderson, 2002). Furthermore, Pow and Sullivan (2007) observed a strong expression of microtubule associated protein 2 (MAP2), a regulator of neurite outgrowth, in cones of humans with AMD. Whether MAP2 plays a role in cone neurite sprouting after early postnatal horizontal cell ablation remains to be seen. Further investigations will be needed to reveal the precise mechanisms underlying axonal outgrowth and synaptogenesis of cones in horizontal cell-ablated mice. Nevertheless, our study underlines the potential of the mature retina for morphological plasticity and provides the first evidence that adult cones may be able to form new synapses with OFF bipolar cells.

## DATA AVAILABILITY STATEMENT

The original contributions presented in the study are included in the article/**Supplementary Material**, further inquiries can be directed to the corresponding author/s.

## ETHICS STATEMENT

The animal study was reviewed and approved by Niedersächsisches Landesamt für Verbraucherschutz und Lebensmittelsicherheit.

## AUTHOR CONTRIBUTIONS

LN, KD, and UJ-B designed the experiments and contributed to the interpretation of data. LN and UJ-B performed the experiments. LN prepared the figures and wrote a first draft of the manuscript. KD and UJ-B revised the manuscript. All authors contributed to the article and approved the submitted version.

## REFERENCES

- Behrens, C., Schubert, T., Haverkamp, S., Euler, T., and Berens, P. (2016). Connectivity map of bipolar cells and photoreceptors in the mouse retina. *eLife* 5:e20041. doi: 10.7554/eLife.20041
- Blanks, J. C., Adinolfi, A. M., and Lolley, R. N. (1974). Synaptogenesis in the photoreceptor terminal of the mouse retina. *J. Comp. Neurol.* 156, 81–93. doi: 10.1002/cne.901560107
- Chong, N. H., Alexander, R. A., Barnett, K. C., Bird, A. C., and Luthert, P. J. (1999). An immunohistochemical study of an autosomal dominant Feline Rod/Cone dysplasia (Rdy Cats). *Exp. Eye Res.* 68, 51–57. doi: 10.1006/exer.1998.0580
- Dick, O., tom Dieck, S., Altmann, W. D., Ammermüller, J., Weiler, R., Garner, C. C., et al. (2003). The presynaptic active zone protein bassoon is essential for photoreceptor ribbon synapse formation in the retina. *Neuron* 37, 775–786. doi: 10.1016/S0896-6273(03)00086-2
- Fariss, R. N., Li, Z.-Y., and Milam, A. H. (2000). Abnormalities in rod photoreceptors, amacrine cells, and horizontal cells in human retinas with retinitis pigmentosa. *Am. J. Ophthalmol.* 129, 215–223. doi: 10.1016/S0002-9394(99)00401-8
- Fei, Y. (2002). Cone neurite sprouting: an early onset abnormality of the cone photoreceptors in the retinal degeneration mouse. *Mol. Vis.* 8, 306–314.
- Haeseleer, F., Imanishi, Y., Maeda, T., Possin, D. E., Maeda, A., Lee, A., et al. (2004). Essential role of Ca<sup>2+</sup>-binding protein 4, a Cav1.4 channel regulator, in photoreceptor synaptic function. *Nat. Neurosci.* 7, 1079–1087. doi: 10.1038/nn1320
- Hasan, N., Ray, T. A., and Gregg, R. G. (2016). CACNA1S expression in mouse retina: novel isoforms and antibody cross-reactivity with GPR179. *Vis. Neurosci.* 33:E009. doi: 10.1017/S0952523816000055
- Haverkamp, S., Grünert, U., and Wässle, H. (2000). The cone pedicle, a complex synapse in the retina. *Neuron* 27, 85–95. doi: 10.1016/S0896-6273(00)00011-8
- Haverkamp, S., Specht, D., Majumdar, S., Zaidi, N. F., Brandstätter, J. H., Wasco, W., et al. (2008). Type 4 OFF cone bipolar cells of the mouse retina express calnenin and contact cones as well as rods. *J. Comp. Neurol.* 507, 1087–1101. doi: 10.1002/cne.21612
- Johnson, J., Tian, N., Caywood, M. S., Reimer, R. J., Edwards, R. H., and Copenhagen, D. R. (2003). Vesicular neurotransmitter transporter expression in developing postnatal rodent retina: GABA and glycine precede glutamate. *J. Neurosci.* 23, 518–529. doi: 10.1523/JNEUROSCI.23-02-00518.2003
- Keeley, P. W., Luna, G., Fariss, R. N., Skyles, K. A., Madsen, N. R., Raven, M. A., et al. (2013). Development and plasticity of outer retinal circuitry following genetic removal of horizontal cells. *J. Neurosci.* 33, 17847–17862. doi: 10.1523/JNEUROSCI.1373-13.2013
- Kung, F., Wang, W., Tran, T. S., and Townes-Anderson, E. (2017). Sema3A reduces sprouting of adult rod photoreceptors In Vitro. *Invest. Ophthalmol. Vis. Sci.* 58, 4318–4331. doi: 10.1167/iovs.16-21075
- Lewis, G. P., Charteris, D. G., Sethi, C. S., and Fisher, S. K. (2002). Animal models of retinal detachment and reattachment: identifying cellular events that may affect visual recovery. *Eye* 16, 375–387. doi: 10.1038/sj.eye.6700202
- Li, Z., Kljavin, I., and Milam, A. (1995). Rod photoreceptor neurite sprouting in retinitis pigmentosa. *J. Neurosci.* 15, 5429–5438. doi: 10.1523/JNEUROSCI.15-08-05429.1995
- Li, Z.-Y., Wong, F., Chang, J. H., Possin, D. E., Hao, Y., Petters, R. M., et al. (1998). Rhodopsin transgenic pigs as a model for human retinitis pigmentosa. *Invest. Ophthalmol. Vis. Sci.* 39, 808–812.
- Lin, B., Masland, R. H., and Strettoi, E. (2009). Remodeling of cone photoreceptor cells after rod degeneration in rd mice. *Exp. Eye Res.* 88, 589–599. doi: 10.1016/j.exer.2008.11.022
- Mansergh, F., Orton, N. C., Vessey, J. P., Lalonde, M. R., Stell, W. K., Tremblay, F., et al. (2005). Mutation of the calcium channel gene *Cacna1f* disrupts calcium signaling, synaptic transmission and cellular organization in mouse retina. *Hum. Mol. Genet.* 14, 3035–3046. doi: 10.1093/hmg/ddi336
- Mataruga, A., Kremmer, E., and Müller, F. (2007). Type 3a and type 3b OFF cone bipolar cells provide for the alternative rod pathway in the mouse retina. *J. Comp. Neurol.* 502, 1123–1137. doi: 10.1002/cne.21367
- Matsuoka, R. L., Jiang, Z., Samuels, I. S., Nguyen-Ba-Charvet, K. T., Sun, L. O., Peachey, N. S., et al. (2012). Guidance-Cue control of horizontal cell morphology, lamination, and synapse formation in the mammalian outer retina. *J. Neurosci.* 32, 6859–6868. doi: 10.1523/JNEUROSCI.0267-12.2012
- Michalakis, S., Schäferhoff, K., Spiwocks-Becker, I., Zabouri, N., Koch, S., Koch, F., et al. (2013). Characterization of neurite outgrowth and ectopic synaptogenesis in response to photoreceptor dysfunction. *Cell. Mol. Life Sci.* 70, 1831–1847. doi: 10.1007/s00018-012-1230-z
- Milam, A. H., and Li, Z.-Y. (1996). Clinicopathologic Effects of the Q64ter Rhodopsin Mutation in Retinitis Pigmentosa. *Invest. Ophthalmol. Vis. Sci.* 37, 753–765.
- Nemitz, L., Dedek, K., and Janssen-Bienhold, U. (2019). Rod bipolar cells require horizontal cells for invagination into the terminals of rod photoreceptors. *Front. Cell. Neurosci.* 13:423. doi: 10.3389/fncel.2019.00423

## FUNDING

This work was supported by the Deutsche Forschungsgemeinschaft (Grant DE1154/3-1 to KD and UJ-B, Research Training Group 1885/1-2 stipend to LN).

## ACKNOWLEDGMENTS

We thank Bettina Kewitz for excellent technical assistance and Frank Müller (FZ Jülich, Jülich, Germany) for the generous gift of the HCN4 antibody. We also acknowledge the Fluorescence Microscopy Service Unit and the Electron and Light Microscopy Service Unit (University of Oldenburg, Oldenburg, Germany) for the use of the imaging facilities.

## SUPPLEMENTARY MATERIAL

The Supplementary Material for this article can be found online at: <https://www.frontiersin.org/articles/10.3389/fncel.2021.657594/full#supplementary-material>

- O'Donnell, M., Chance, R. K., and Bashaw, G. J. (2009). Axon growth and guidance: receptor regulation and signal transduction. *Annu. Rev. Neurosci.* 32, 383–412. doi: 10.1146/annurev.neuro.051508.135614
- Olney, J. W. (1968). An electron microscopic study of synapse formation, receptor outer segment development, and other aspects of developing mouse retina. *Invest. Ophthalmol. Vis. Sci.* 7, 250–268.
- Omori, Y., Araki, F., Chaya, T., Kajimura, N., Irie, S., Terada, K., et al. (2012). Presynaptic dystroglycan-pikachurin complex regulates the proper synaptic connection between retinal photoreceptor and bipolar cells. *J. Neurosci.* 32, 6126–6137. doi: 10.1523/JNEUROSCI.0322-12.2012
- Orlandi, C., Omori, Y., Wang, Y., Cao, Y., Ueno, A., Roux, M. J., et al. (2018). Transsynaptic binding of orphan receptor GPR179 to Dystroglycan-pikachurin complex is essential for the synaptic organization of photoreceptors. *Cell Rep.* 25, 130–145. doi: 10.1016/j.celrep.2018.08.068
- Poche, R. A., Kwan, K. M., Raven, M. A., Furuta, Y., Reese, B. E., and Behringer, R. R. (2007). Lim1 is essential for the correct laminar positioning of retinal horizontal cells. *J. Neurosci.* 27, 14099–14107. doi: 10.1523/JNEUROSCI.4046-07.2007
- Pow, D. V., and Sullivan, R. K. (2007). Nuclear kinesis, neurite sprouting and abnormal axonal projections of cone photoreceptors in the aged and AMD-afflicted human retina. *Exp. Eye Res.* 84, 850–857. doi: 10.1016/j.exer.2007.01.005
- Puller, C., Ivanova, E., Euler, T., Haverkamp, S., and Schubert, T. (2013). OFF bipolar cells express distinct types of dendritic glutamate receptors in the mouse retina. *Neuroscience* 243, 136–148. doi: 10.1016/j.neuroscience.2013.03.054
- Puthussery, T., Gayet-Primo, J., and Taylor, W. R. (2010). Localization of the calcium-binding protein secretagogin in cone bipolar cells of the mammalian retina. *J. Comp. Neurol.* 518, 513–525. doi: 10.1002/cne.22234
- Raven, M. A., Orton, N. C., Nassar, H., Williams, G. A., Stell, W. K., Jacobs, G. H., et al. (2008). Early afferent signaling in the outer plexiform layer regulates development of horizontal cell morphology. *J. Comp. Neurol.* 506, 745–758. doi: 10.1002/cne.21526
- Rich, K. A., Zhan, Y., and Blanks, J. C. (1997). Migration and synaptogenesis of cone photoreceptors in the developing mouse retina. *J. Comp. Neurol.* 388, 47–63. doi: 10.1002/(SICI)1096-9861(19971110)388:1<47:AID-CNE4<3.0.CO;2-O
- Saito, M., Iwawaki, T., Taya, C., Yonekawa, H., Noda, M., Inui, Y., et al. (2001). Diphtheria toxin receptor-mediated conditional and targeted cell ablation in transgenic mice. *Nat. Biotechnol.* 19, 746–750. doi: 10.1038/90795
- Sato, S., Omori, Y., Katoh, K., Kondo, M., Kanagawa, M., Miyata, K., et al. (2008). Pikachurin, a dystroglycan ligand, is essential for photoreceptor ribbon synapse formation. *Nat. Neurosci.* 11, 923–931. doi: 10.1038/nn.2160
- Satz, J. S., Philp, A. R., Nguyen, H., Kusano, H., Lee, J., Turk, R., et al. (2009). Visual impairment in the absence of dystroglycan. *J. Neurosci.* 29, 13136–13146. doi: 10.1523/JNEUROSCI.0474-09.2009
- Schindelin, J., Arganda-Carreras, I., Frise, E., Kaynig, V., Longair, M., Pietzsch, T., et al. (2012). Fiji: an open-source platform for biological-image analysis. *Nat. Methods* 9, 676–682. doi: 10.1038/nmeth.2019
- Schmitz, F., Königstorfer, A., and Südhof, T. C. (2000). RIBEYE, a component of synaptic ribbons: a protein's journey through evolution provides insight into synaptic ribbon function. *Neuron* 28, 857–872. doi: 10.1016/s0896-6273(00)00159-8
- Schubert, T., Huckfeldt, R. M., Parker, E., Campbell, J. E., and Wong, R. O. (2010). Assembly of the outer retina in the absence of GABA synthesis in horizontal cells. *Neural Dev.* 5:15. doi: 10.1186/1749-8104-5-15
- Sethi, C. S., Lewis, G. P., Fisher, S. K., Leitner, W. P., Mann, D. L., Luthert, P. J., et al. (2005). Glial remodeling and neural plasticity in human retinal detachment with proliferative vitreoretinopathy. *Invest. Ophthalmol. Vis. Sci.* 46, 329–342. doi: 10.1167/iovs.03-0518
- Sherry, D. M., Wang, M. M., Bates, J., and Frishman, L. J. (2003). Expression of vesicular glutamate transporter 1 in the mouse retina reveals temporal ordering in development of rod vs. cone and ON vs. OFF circuits. *J. Comp. Neurol.* 465, 480–498. doi: 10.1002/cne.10838
- Sonntag, S., Dedek, K., Dorgau, B., Schultz, K., Schmidt, K.-F., Cimiotti, K., et al. (2012). Ablation of retinal horizontal cells from adult mice leads to rod degeneration and remodeling in the outer retina. *J. Neurosci.* 32, 10713–10724. doi: 10.1523/JNEUROSCI.0442-12.2012
- Soto, F., Watkins, K. L., Johnson, R. E., Schottler, F., and Kerschensteiner, D. (2013). NGL-2 regulates pathway-specific neurite growth and lamination, synapse formation, and signal transmission in the retina. *J. Neurosci.* 33, 11949–11959. doi: 10.1523/JNEUROSCI.1521-13.2013
- Strettoi, E., and Pignatelli, V. (2000). Modifications of retinal neurons in a mouse model of retinitis pigmentosa. *Proc. Natl. Acad. Sci. U.S.A.* 97, 11020–11025. doi: 10.1073/pnas.190291097
- Strettoi, E., Porciatti, V., Falsini, B., Pignatelli, V., and Rossi, C. (2002). Morphological and functional abnormalities in the inner retina of the rd/rd Mouse. *J. Neurosci.* 22, 5492–5504. doi: 10.1523/JNEUROSCI.22-13-05492.2002
- Ströh, S., Puller, C., Swirski, S., Hölzel, M.-B., van der Linde, L. I. S., Segelken, J., et al. (2018). Eliminating glutamatergic input onto horizontal cells changes the dynamic range and receptive field organization of mouse retinal ganglion cells. *J. Neurosci.* 38, 2015–2028. doi: 10.1523/JNEUROSCI.0141-17.2018
- tom Dieck, S., Specht, D., Strenzke, N., Hida, Y., Krishnamoorthy, V., Schmidt, K.-F., et al. (2012). Deletion of the presynaptic scaffold CAST reduces active zone size in rod photoreceptors and impairs visual processing. *J. Neurosci.* 32, 12192–12203. doi: 10.1523/JNEUROSCI.0752-12.2012
- Wu, F., Li, R., Umino, Y., Kaczynski, T. J., Sapkota, D., Li, S., et al. (2013). Onecut1 is essential for horizontal cell genesis and retinal integrity. *J. Neurosci.* 33, 13053–13065. doi: 10.1523/JNEUROSCI.0116-13.2013
- Zabouri, N., and Haverkamp, S. (2013). Calcium channel-dependent molecular maturation of photoreceptor synapses. *PLoS One* 8:e63853. doi: 10.1371/journal.pone.0063853
- Zhang, N., and Townes-Anderson, E. (2002). Regulation of structural plasticity by different channel types in rod and cone photoreceptors. *J. Neurosci.* 22, 7065–7079. doi: 10.1523/JNEUROSCI.22-16-07065.2002

**Conflict of Interest:** The authors declare that the research was conducted in the absence of any commercial or financial relationships that could be construed as a potential conflict of interest.

Copyright © 2021 Nemitz, Dedek and Janssen-Bienhold. This is an open-access article distributed under the terms of the Creative Commons Attribution License (CC BY). The use, distribution or reproduction in other forums is permitted, provided the original author(s) and the copyright owner(s) are credited and that the original publication in this journal is cited, in accordance with accepted academic practice. No use, distribution or reproduction is permitted which does not comply with these terms.